



Medical Device Accessories

The METALLECA® Medical Device Accessories need high quality requirements for materials, surfaces and dimensions. Chinese proverb: a workman must first sharpen his tools if he is to do his work well. With the rapid development of medical device technology, the demand for medical device precision stamping parts is increasing. At the same time, the technical requirements are getting higher, and the applications are getting wider. Basically, stamping parts appearance has to zero defects. For this reason, a standardized manufacturing process to ensure quality is necessary. We focus on the selection of raw materials, mold requirements (design, material selection, surface cleanliness, dimensional accuracy, service life), the precision accuracy of stamping equipment, production efficiency, protective turnaround, post processing, surface treatment, packaging methods, etc.

Product Description

These are related to the METALLECA® Medical Device Accessories news, in which you can learn about the updated information in Medical Device Accessories, to help you better understand and expand Medical Device Accessories market. Because the market for Medical Device Accessories is evolving and changing, so we recommend that you collect our website, and we will show you the latest news on a regular basis.

Medical Device Accessories with Quotation

Assume full obligation to meet all demands of our customers; accomplish ongoing advancements by promoting the advancement of our customers; become the final permanent cooperative partner of clientele and maximize the interests of shoppers for OEM Manufacturer China 5052 Aluminum Anodized Blushed Machining Medical Device CNC Accessories, Now we have extensive goods source as well as price tag is our advantage. Welcome to inquire about our products and solutions. OEM Manufacturer China CNC Accessories, 5052 Aluminum Anodized, We have the best solutions and expert sales and technical team. With the development of our company, we've been able to deliver customers best products, good technical support, perfect after-sales service.

Medical Device Accessories Introduction

Our medical accessories are manufactured by the stamping process, then using post processing and surface treatment has a certain aesthetic and high precision.

Assembling parts have provided for well-known domestic medical machinery enterprises.

We will select reasonable surface treatment methods to improve the quality of the overall equipment according to the requirements for different needs, such as polishing, electroplating, oxidation, and so forth.

At present, most of the production of stamping parts is aluminum, and stainless steel secondly.

Medical Device Accessories Parameter (Specification)

Production Process	Material	Strength	Application
Stamping	ASTM 304/316 AL5052-0 AL6061 AL1016	Simple structure, easy to deform No cracks and defects Dimensional precision accuracy High productivity	Basic surgical instruments Medical electronic equipment Surgical Instruments

Medical Device Accessories Feature And Application

Since the continuous development of stamping technology is towards high-speed, precision and intelligence, more precision accuracy products have emerged in recent years.

Medical accessories are professional used for supporting medical equipment. For example: basic surgical instruments, medical electronic equipment, surgical instruments, etc.

Types of METALLECA® Medical Device Accessories:

Type 1: refers to medical devices that can ensure their safety and effectiveness through convention management. No need to apply for filing and qualification.

Type 2: refers to medical devices that their safety and effectiveness should be controlled. Must apply to the relevant department for filing.

Type 3: refers to medical devices those are implanted in the human body or used to support life. For this reason, it is potentially dangerous to the human body, its safety and effectiveness must be strictly controlled. Must obtain "Medical Device Operating Enterprise Qualification".

In currently, we are mainly supporting type 1 Medical Device Accessories.

Product Details

Production Process: stamping + machining + surface treatment

Materials: aluminum alloy 5052-0、1016、6061

Stainless steel ASTM304/316

Surface treatment: polishing, oxidation, electroplating, wire drawing

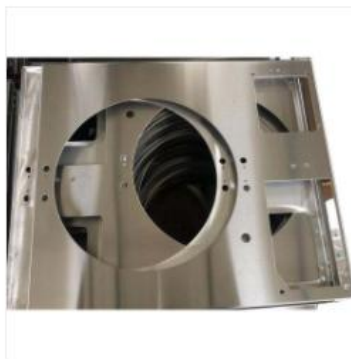
Surface requirements: customize

Product Qualification

Matching photos:



Product photo:



Deliver, Shipping And Serving

Transportation: by sea, by rail, by air

Shipping: pallets (plywood or fumigated wood), wooden case + lid + carton + corner protector + PE film

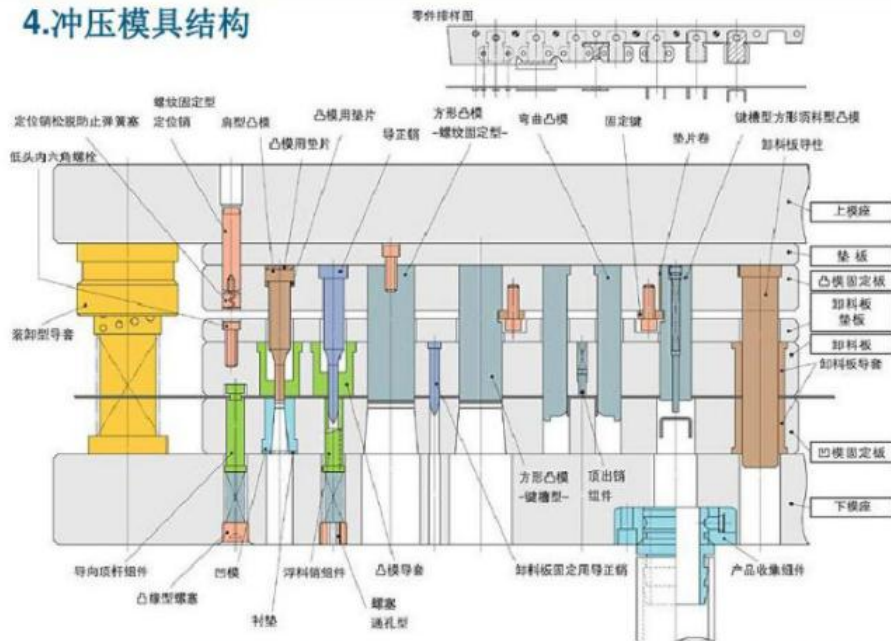
Delivery: FOB Ningbo or Shanghai recommend

Workshop photos: Stamping equipment and workshop



Mold photos

4. 冲压模具结构



模具结构正面图

