

Excavator Liner

Construction site machinery is widely used in demand, construction machinery including to forklifts, shoveling and transporting machinery, compaction machinery, concrete machinery and METALLECA® Excavator Liner.

The development of technology and infrastructure is rapid in the world and the national in the 21st century. Especially, real estates and national major projects (such as new energy and hydropower stations) are also growing at the same time. All the constructions create market demand for related industries and raise the need of construction machinery. For example, heavy mining machinery: metallurgical machinery, mining machinery, hoisting machinery, loading and unloading machinery, industrial and mining vehicles, cement equipment, etc.



Product Description

The following is the introduction of high quality METALLECA® Excavator Liner, hoping to help you better understand Excavator Liner. Welcome new and old customers to continue to cooperate with us to create a better future!"To achieve zero faults via continuous improvement, to satisfy our customers' needs and expectations, to make pledges we fully understand and think we can keep, and to keep all commitments to customers on schedule," is our guiding concept.

Low Price Excavator Liner of Suppliers

To create additional worth for consumers is our enterprise philosophy; buyer growing is our working chase for Cheapest Price China Wearable Hardfacing Plate Bucket Excavator Wear Liners, We welcome all with the consumers and pals to call us for mutual positive aspects. Hope to do additional company along with you. Cheapest Price China Plate, Steel Plate, We've got sufficient experience in producing solutions according to samples or drawings. We warmly welcome customers from home and abroad to visit our company, and to cooperate with us for a splendid future together.

Excavator Liner Introduction

METALLECA® Excavator Liner are important but consumable parts on excavators. Both are connected by shaft pin.If the worn-out part of the Bucket

Teeth of Excavator is the tooth tip, just replace the tip. For this reason, there are several kind of Bucket Teeth of Excavator that based on different function with different Bucket Teeth of Excavator . For example, rock teeth for iron & quarry, earthmoving teeth for soil & sand, conical teeth for coal mines. According to the Bucket Teeth of Excavator seat, it can be divided into vertical pin Bucket Teeth of Excavator, horizontal pin Bucket Teeth of Excavator, and rotary digging Bucket Teeth of Excavator (V series Bucket Teeth of Excavator).

Excavator Liner Parameter (Specification)

Production process	material	Strength	Application
Investment Casting (Precision)	FMS130/FMS140 ZGMn13	Wearable, high hardness	Heavy mining machinery Excavator
Cast steel (sand foundry)		High temperature stability Economic price High toughness	Shoveling and transporting machinery Crusher (stone) Loading and unloading machinery
Cast steel (sand foundry)	ductile iron	Not easily deformed	

Excavator Liner Feature And Application

Excavator Liner is an earth-moving machine that uses a bucket to excavate above or below the surface materials. After that, the materials are loaded into a transporter vehicle or unloaded to a stockyard.

The excavator for the excavation of materials such as soil, coal, and sand that is composed of power unit, working unit, slewing mechanism, control mechanism, transmission mechanism, and walking mechanism.

The three most important parameters of excavator are operating weight, engine power and bucket capacity.

The most branded excavators on the market are: Komatsu, Daewoo, Kobe Steel, Caterpillar, Hyundai, Volvo, Liebherr, Hitachi, etc.

The commonly used excavators produced in China are: YUCHAI, SANY, SDLG, Shantui, Ray Walter, LiuGong, XGMA, LONKING, Sunvo intelligent, ZOOMLION, etc.

Since METALLECA® Excavator Liner are usually work under severe wear and strong impact conditions, it is required to have particularly good abrasion resistance and high toughness.

Its heat treatment is generally to heat the steel to 1000~1100℃ for a period of time, that all the carbides in the steel can be dissolved into austenite. Then, it is water quenching quickly to retain the austenite structure.

The hardness at this time is HB °C as water toughening treatment, and no tempering is required afterwards.

Product Details

Production Process: precision (investment) casting, forging die casting + heat treatment + surface treatment

Materials: cast steel:

Surface treatment: shot blast, spraying, spray paint

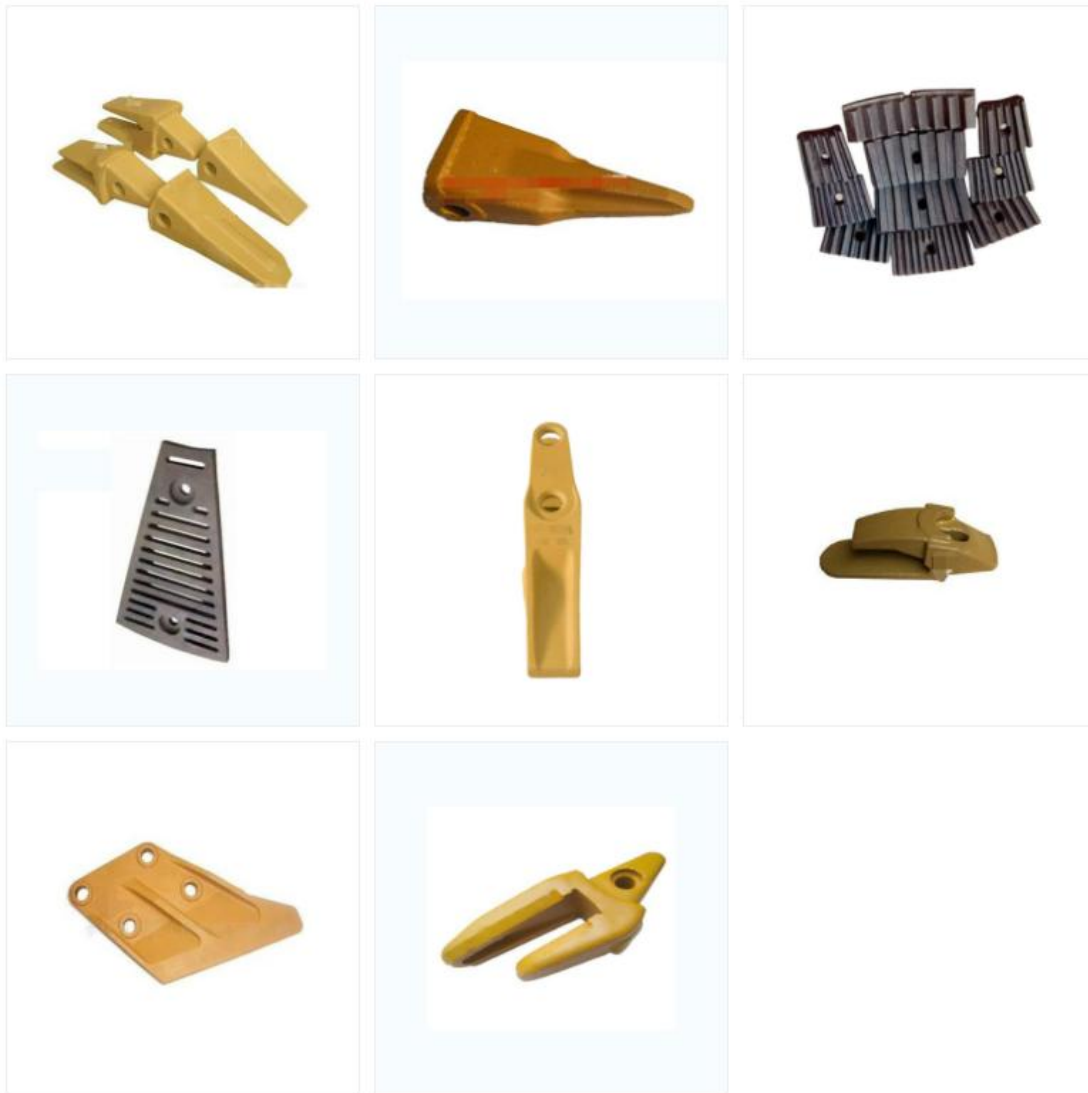
Surface requirements: customize

Product Qualification

Matching photos:



Product photo:



Deliver, Shipping And Serving

Transportation: by sea, by rail, by air

Shipping: pallets (plywood or fumigated wood), wooden case +lid + PE film

Delivery: FOB Ningbo or Shanghai recommend

Workshop photos: modeling, pouring, shell making, melting workshop

