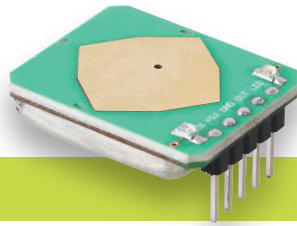


CE RED FCC REACH



PD-V19 5.8GHz 360°/180° Microwave Motion Sensor

Application

- Intelligent switch
- Wall-hung switch
- Intruder detect

Feature and advantage

- Low wireless power output
- Low power consumption
- Non-contact detection
- Easy to connect with the controller
- Low noise output

PD-V19 5.8GHz 360°/180° Microwave Motion Sensor is a C-Band Bi-Static Doppler transceiver module. It's built-in Resonator Oscillator (CRO). This module, V19 adopts flat Plane Antenna, suitable for wall mounting. It can improve its front signal receiving ability and reduce its flank blind area. Its performance is better than the sensors in the market.

This module is ideally suitable for occupancy sensor in automatic lighting switches. It can also be used for ceiling mount intruder detectors.

According with EN 300440-V2.1.1、EN 62479: 2010

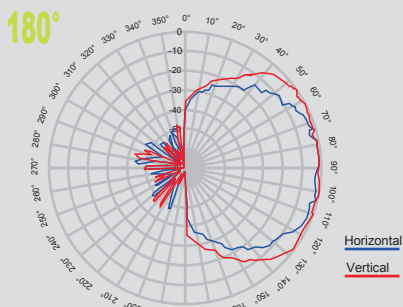
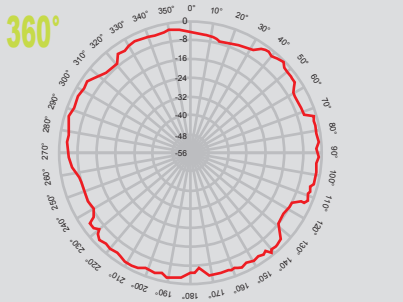
RED directive - 2014/53/EU

According with FCC Part 15.249

According with EN 62321,ROHS directive - 2011/65/EU

According with REACH directive - 1907/2006/EC

Antenna Beam Pattern



FCC Statement:

Any Changes or modifications not expressly approved by the party responsible for compliance could void the user's authority to operate the equipment.

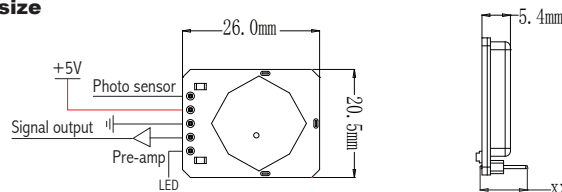
This device complies with part 15 of the FCC Rules. Operation is subject to the following two conditions:

- (1) This device may not cause harmful interference, and
- (2) This device must accept any interference received, including interference that may cause undesired operation.

FCC Radiation Exposure Statement:

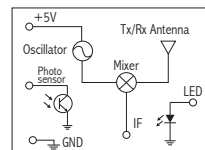
This equipment complies with FCC radiation exposure limits set forth for an uncontrolled environment. This equipment should be installed and operated with minimum distance 20cm between the radiator & your body.

Products size



Note: X height can be customized according to customer requirements.

Block diagram and connection



Parameter	Symbol	Min	Typ	Max	Units	Notes
Frequency Setting	Fstandard	5.725	5.8	5.875	GHz	
Radiated Power (EIRP)	Pout		3.54		dBm	
Supply Voltage	VCC	4.75	5.0	5.25	V	
Current Consumption	ICC	10	12	14	mA	
Current Consumption	ICC	13	15	17	mA	
Operating Temperature	TOP	-10	25	80	°C	FCC
Storage environment	TSTG		0-40		°C	CE
Products size		26.0x20.5x5.4			mm	
Weight	Weight	3.3	3.8	4.3	g	20-70% RH humidity

Ningbo Pdlux Electronic Technology CO.,Ltd

Add: 17F, Commerce Building of NingBo,
No 588, South Tiantong Rode, Yinzhou District, Ningbo, China

Tel: 86-574-83008608 Fax: 86-574-83008609
Email: pdlux@pdlux.com Web: www.pdlux.com