



## New Electric Part Turn Motor Actuator



"AOX-R" series motor valve actuator is a newly designed new electric part turn motor actuator developed and manufactured by AOX, a Chinese manufacturer. The "AOX-R" series has been awarded the CCC, CCS, DNVGL and EU CE. "AOX-R" series motor actuators are used to control valves with 0 ° ~ 270 ° rotation and other similar products, such as butterfly

valves, ball valves, dampers, flapper valves, plug valves, shutter valves, etc.

## New Electric Part Turn Motor Actuator

### Summary

"AOX-R" series motor valve actuator is a newly designed **new electric part turn motor actuator** developed and manufactured by AOX, a Chinese manufacturer. The "AOX-R" series has been awarded the CCC, CCS, DNVGL and EU CE. "AOX-R" series motor actuators are used to control valves with 0 ° ~ 270 ° rotation and other similar products, such as butterfly valves, ball valves, dampers, flapper valves, plug valves, shutter valves, etc.

## Product Introduction of the new electric part turn motor actuator

"AOX-R" series **new electric part turn motor actuators** are suitable for petroleum, chemical and other industries. The main operation requirements of AOX motor actuators are: before electric operation, first use manual operation method to check whether the opening meter and valve angle (fully open and fully closed) are consistent; secondly, check whether the wiring is correct; at the same time, use external switch to confirm the opening and closing action; finally, start electric operation after confirming the above status. As a special

Zhejiang Aoxiang Auto-Control Technology CO.,Ltd

Tel: [+86-577-59890750](tel:+86-577-59890750)

Phone: [+86-18967766527](tel:+86-18967766527)

Fax: [+86-0577-65921296](tel:+86-0577-65921296)

E-mail: [zjaox@zjaox.com](mailto:zjaox@zjaox.com)



molybdenum based grease with long service life and good pressure resistance, no oil is required. Regular operation: when the action of the valve is very rare, the machine can be driven regularly to check whether there is any abnormality.



### Product Parameter ( Specification )of the new electric part turn motor actuator

Control mode:	on-off / regulating / intelligent;
Protection grade:	IP67, (IP68 optional);
Voltage:	AC110 ~ 265V, AC / DC 24V multi voltage input;
Single phase:	AC220V / AC110V / AC24V / DC24V;
Torque range:	30 ~ 5000NM;
Self locking device:	turbine and worm mechanism provide

Zhejiang Aoxiang Auto-Control Technology CO.,Ltd

Tel: [+86-577-59890750](tel:+86-577-59890750)

Phone: [+86-18967766527](tel:+86-18967766527)

Fax: [+86-0577-65921296](tel:+86-0577-65921296)

E-mail: [zjaox@zjaox.com](mailto:zjaox@zjaox.com)



	self-locking;
Weight:	2.1 KGS ~ 68KGS
Lubrication:	aluminum base grease (EP type);
Manual operation:	mechanical handle (optional handwheel);
Motor:	squirrel cage asynchronous click, insulation class H;
Ambient temperature:	20°C ~ + 70°C;
Control mode:	on-off / regulating / intelligent;
Manual Override:	N/A
Mounting Flange:	(ISO 5211)F04/F05/F07/F10/F12/F14/F16
Type of Modulating Signal:	0-10V, 2-10V, 4-20mA, etc.
Type of Field-bus Signal:	Modbus-RTU, Profibus-DP, etc.
Local Controller:	AOX remote control(Optional)

Model	Maximu m output torque	Actuatio n time	Output shaft (mm)		Electrical machiner y	Single-phase rated current (A)	Weigh t
		N·M	( 90°)	Square	Dee	(W)	220V(A)50H

Zhejiang Aoxiang Auto-Control Technology CO.,Ltd

Tel: +86-577-59890750

Phone: +86-18967766527

Fax: +86-0577-65921296

E-mail: [zjaox@zjaox.com](mailto:zjaox@zjaox.com)



				p		Z (kg)	
AOX-R-00 3	30	20	11×11	15.5	8	0.24	2.1
AOX-R-00 5	50	30	14×14	18	10	0.23	3.6
AOX-R-00 8	80	30	14×14	18	10	0.24	3.6
AOX-R-01 0	100	30	17×17	22.5	15	0.41	4.6
AOX-R-01 5	150	40	17×17	22.5	15	0.41	4.6
AOX-R-02 0	200	30	22×22	26	60	0.44	13
AOX-R-03 0	300	30	22×22	26	60	0.48	13.4
AOX-R-04 0	400	30	22×22	26	60	0.54	13.8
AOX-R-06 0	600	40	27×27	32.5	60	0.57	14
AOX-R-08	800	40	27×27	32.5	90	0.91	14.3

Zhejiang Aoxiang Auto-Control Technology CO.,Ltd

Tel: [+86-577-59890750](tel:+86-577-59890750)

Phone: [+86-18967766527](tel:+86-18967766527)

Fax: [+86-0577-65921296](tel:+86-0577-65921296)

E-mail: [zjaox@zjaox.com](mailto:zjaox@zjaox.com)



0							
AOX-R-10 0	1000	40	27×27	32.5	90	1.18	14.5
AOX-R-16 0	1600	60	MaxΦ6 0	133	90	1.08	68
AOX-R-20 0	2000	60	MaxΦ6 0	133	90	1.30	68
AOX-R-30 0	3000	120	MaxΦ6 0	133	90	1	68
AOX-R-40 0	4000	200	MaxΦ6 0	133	90	0.93	68
AOX-R-50 0	5000	200	MaxΦ6 0	133	90	1	68

## Product Feature And Application of the new electric part turn motor actuator

Other electric actuators

AOX-R series

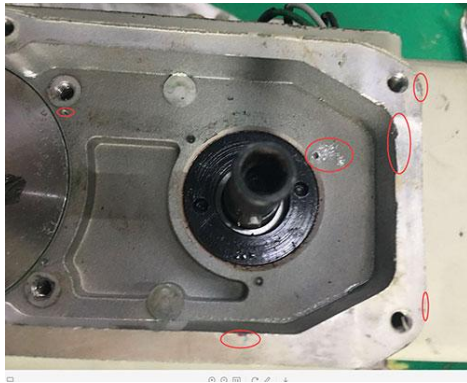
Zhejiang Aoxiang Auto-Control Technology CO.,Ltd

Tel: [+86-577-59890750](tel:+86-577-59890750)

Phone: [+86-18967766527](tel:+86-18967766527)

Fax: [+86-0577-65921296](tel:+86-0577-65921296)

E-mail: [zjaox@zjaox.com](mailto:zjaox@zjaox.com)



The details of electric valve actuators manufactured by other manufacturers are not well handled, for example, the burrs on the processing surface are not processed, and there are sand holes. There are quality hidden dangers. The internal cavity is not subject to physical treatment and oxidation treatment, which is easy to be corroded, reducing the service life and effect of the actuator. The **new electric part turn motor actuators** manufactured by AOX are also well done in detail, and the machining surface is free of burrs and sand holes. The internal cavity is subject to physical treatment and oxidation treatment, which is not easy to be corroded.

## **Production details of the new electric part turn motor actuator**

Adjustment of travel limit: Turn the hand wheel to move the actuator to the fully closed position of the valve. Then, loosen the retaining nut of the limit cam with a wrench, turn the limit cam (yellow on, red off) to adjust it to the position just pressing the limit switch (CLS), and then

Zhejiang Aoxiang Auto-Control Technology CO.,Ltd

Tel: [+86-577-59890750](tel:+86-577-59890750)

Phone: [+86-18967766527](tel:+86-18967766527)

Fax: +86-0577-65921296

E-mail: [zjaox@zjaox.com](mailto:zjaox@zjaox.com)



tighten the limit cam nut. In this way, the position of travel limit when the actuator is fully closed is set. The position at full opening is set in the same way.

