



Screw Cap Assembling Machine

Screw Cap Assembling Machine is the automatic machine developed for assembling of several parts bottle caps. Screw Cap Assembling Machine is the necessary machine for cap making factory, package factory, food factory and chemical factory.

Product Description

Screw Cap Assembling Machine

Introduction Of Screw Cap Assembling Machine

Screw Cap Assembling Machine is the automatic machine developed for assembling of several parts bottle caps. Screw Cap Assembling Machine is the necessary machine for cap making factory, package factory, food factory and chemical factory.

ProductParameter (Specification)

Technical Parameter

Model	JU2016
Working electricity	220V
Production capacity(30*20 size)	4000caps/h
Installed electrical power	0.75kw(50-60Hz)
Absorbed electrical power(approximate)	1.5kw
Compressed air consumption	1m ³ /h
Machine size(L*W*H)	2500*1800*1600mm
Elevator machine size(L*W*H)	1500*800*2000mm
Machine weight(L*W*H)	500kgs

Feature Of Screw Cap Assembling Machine

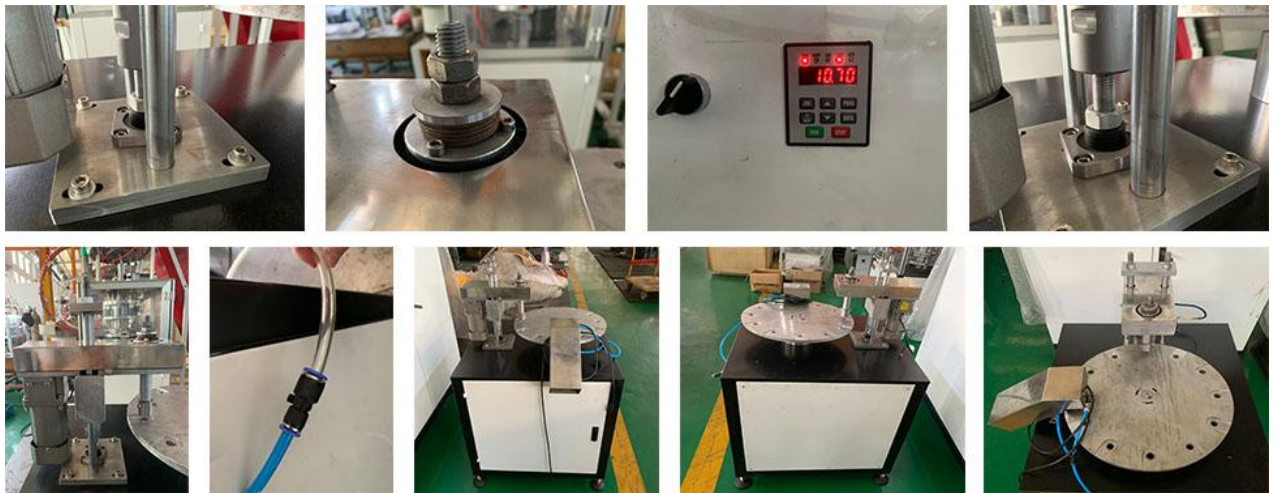
Due to manual cap of slow speed,low efficiency,the cap effect is not in place,resulting in increased cost of manufacturers.

In view of the market,our company independently developed the Screw Cap Assembling Machine is developed to fill the gaps in the market.

Application Of PScrew Cap Assembling Machine

Screw Cap Assembling Machineinclude:oil bucket cap,oil bottle cap,flip-top cap,vinegar cap,beverage cap,water cap and cosmetic cap etc.

Details Of Screw Cap Assembling Machine



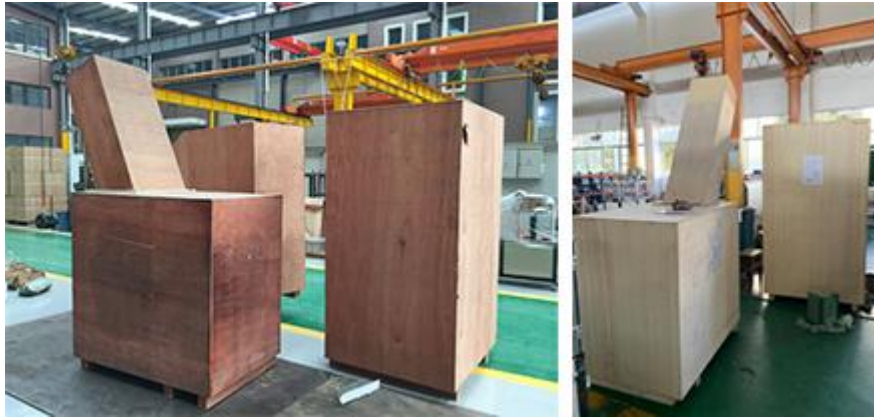
These pictures show you the details of Screw Cap Assembling Machine, and hope to help you understand this product effectively.

Qualification Of Screw Cap Assembling Machine



Deliver,Shipping And Serving Of Screw Cap Assembling Machine

Packing:wooden case



WAY OF TRANSPORT:BY SEA,BY AIR OR BY RAILWAY.

PAYMENT:T/T.50% DEPOSIT,50% THE BALANCE OF PAYMENT BEFORE SHIPMENT.

FAQ

Q:How long does it take to install the equipment

A:Screw Cap Assembling Machine is easy to installed,we have adjust all of machine parts,you just connect the electric and pneumatic then machine in regular work.

Q:How many people do you send abroad to install the equipment?

A:One person.

Q:Can I send goods from other suppliers to your factory? Then load together?

A:It's no problem,But the goods need to declare separately.

Q:How to arrange your Spring Festival vacation

A:For office staff,we usually go to work on the Ninth of the first lunar month.And the holiday about 15 days.For workshop,they usually go to work on the fifteenth day of the first month of lunar year.

Q:Can your equipment be installed in hot weather?

A:Yes.

Q:Can your product be installed in cold weather?

TAIZHOU HONGJINGSHENG PLASTIC MOULD CO.,LTD.

Phone:+86-15990049143

E-mail: miya@hjsmould.com

A:Yes.

Q:Can you send your staff to our side to install equipment for us?

A:Yes.

Q:Can I buy only some spare parts from you?

A:For machine parts, if you purchase Screw Cap Assembling Machine in our factory,we can provide some parts for you in the future.

Q:Will you participate in the exhibition?

A:Yes.We usually join Chinaplas and some foreign exhibitions.

Q:Can you send your equipment to the Guangzhou warehouse?

A:Yes.We usually quote Fob Ningbo price.If you need other terms,just let me know before place an order.

Q:How long will it take you to provide us with a design solution?

A:For design,3-7 days after received the prepaid.We only show the picture for reference and don't provide any 3D design of machine.

Q:What are your equipment manufacturing standards?

A:CE

Q:How do you pack the equipment?

A:Wooden case

Q:Can you design the equipment according to our size?

A:Yes.Screw Cap Assembling Machine can be customized.

Q:How many years has your company made this equipment?

A:More than 20 years.

Q:How many employees does your factory have?

A:70

Q:Do you have any pictures of real equipment items?

A:Yes.

Q:How far is the hotel in your factory?

A:About 10 minutes.

Q:How far is your factory from the airport?

A:About 50 minutes by driving car.

Q:How long does it take from Guangzhou to your factory?

A:If you take a plane, need 3hours.

Q:Where is your factory?

A:Taizhou, Zhejiang province.

Q:Do you provide free spare parts?

A:It depends on machine equipment.

Q:What is the applicable age range of Screw Cap Assembling Machine?

A:Unlimited use.

Q:Do you have a detailed and professional installation manual?

A:Yes.

Q:Do you provide samples? Free or charge?

A:Less sample is free.

Q:What is your minimum order quantity?

A:For products,MOQ is 100000pcs.For mold and machine,the MOQ is 1 sets.

Q:Are you a trading company or a manufacturer?

A:Manufacturer.

Q:How long is your delivery time?

A: Machine:30-60 days

Mold:20-60 days.

Products:depends on quantity.

Q:How many production lines does your factory have?

A:We have 20 sets of injection molding machine to product Screw Cap Assembling Machine.