



## Full Automatic Pad Printer Machine

Full Automatic Pad Printer Machine is a kind of machine special for printing on the surface of cap which has been electronically treated. The procedures from cap sorting, cap delivering, path separating, cap feeding, surface printing to cap dropping are completed full automatically.

### Product Description

## Full Automatic Pad Printer Machine

### Introduction Of Full Automatic Pad Printer Machine

Full Automatic Pad Printer Machine procedures from lid sorting, lid delivering, path separator lid feeding, surface printing to lid dropping are completed full-automatically.

### Product Parameter (Specification)

#### Technical Parameter

|                  |      |
|------------------|------|
| Model            | HJS  |
| Min.cap diameter | 25mm |

|  |                      |
|--|----------------------|
| Max.cap diameter                       | 60mm                 |
| Production capacity(30*20 size)        | 9000-10000caps/h     |
| Installed electrical power             | 1.5kw(50-60Hz)       |
| Absorbed electrical power(approximate) | 1kw                  |
| Compressed air consumption             | 0.8m <sup>3</sup> /h |
| Machine size(L*W*H)                    | 1350*800*2300mm      |
| Elevator machine size(L*W*H)           | 1100*700*1550mm      |
| Machine weight(L*W*H)                  | 555kgs               |

## Feature Of Full Automatic Pad Printer Machine

As a special machine for handling the lid, the Full Automatic Pad Printer Machine on the surface of the electronically processed lid.

## Application Of Full Automatic Pad Printer Machine

The Full Automatic Pad Printer Machine can complete the four steps of selecting cover, sending cover, distributing cover, surface printing to lower cover.

## Details Of Full Automatic Pad Printer Machine



These pictures show you the details of Full Automatic Pad Printer Machine, and hope to help you understand this product effectively.

### Qualification Of Full Automatic Pad Printer Machine



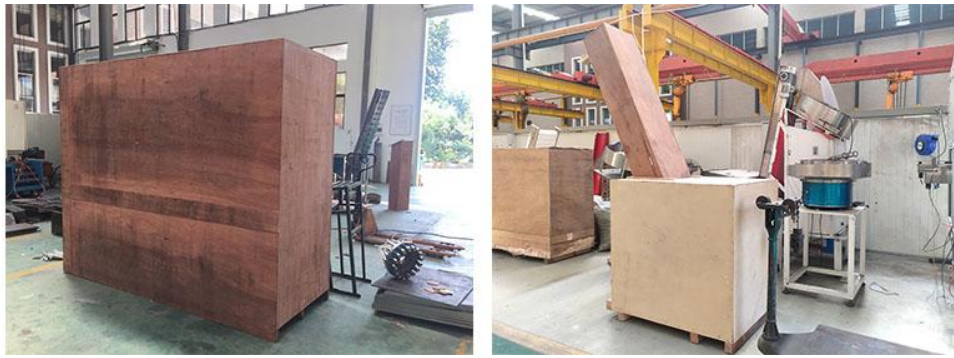
Certificate

CE certification of Machine

CE certification of plastic mould

### Deliver,Shipping And Serving Of Full Automatic Pad Printer Machine

7.Deliver,Shipping And Serving Of Full Automatic Pad Printer Machine  
Packing:wooden case



WAY OF TRANSPORT:BY SEA,BY AIR OR BY RAILWAY.

PAYMENT:T/T.50% DEPOSIT,50% THE BALANCE OF PAYMENT BEFORE SHIPMENT.

## FAQ

Q:How long does it take to install the equipment

A:Full Automatic Pad Printer Machine is easy to installed,we have adjust all of machine parts,you just connect the electric and pneumatic then machine in regular work.

Q:How many people do you send abroad to install the equipment?

A:One person.

Q:Can I send goods from other suppliers to your factory? Then load together?

A:It's no problem,But the goods need to declare separately.

Q:How to arrange your Spring Festival vacation

A:For office staff,we usually go to work on the Ninth of the first lunar month.And the holiday about 15 days.For workshop,they usually go to work on the fifteenth day of the first month of lunar year.

Q:Can your equipment be installed in hot weather?

A:Yes.

Q:Can your product be installed in cold weather?

A:Yes.

Q:Can you send your staff to our side to install equipment for us?

A:Yes.

Q:Can I buy only some spare parts from you?

A:For machine parts, if you purchase Full Automatic Pad Printer Machine in our factory,we can provide some parts for you in the future.

Q:Will you participate in the exhibition?

A:Yes.We usually join Chinaplas and some foreign exhibitions.

Q:Can you send your equipment to the Guangzhou warehouse?

A:Yes.We usually quote Fob Ningbo price.If you need other terms,just let me know before place an order.

Q:How long will it take you to provide us with a design solution?

A:For design,3-7 days after received the prepaid.We only show the picture for reference and don't provide any 3D design of machine.

Q:What are your equipment manufacturing standards?

A:CE

Q:How do you pack the equipment?

A:Wooden case

Q:Can you design the equipment according to our size?

A:Yes.Full Automatic Pad Printer Machine can be customized.

Q:How many years has your company made this equipment?

A:More than 20 years.

Q:How many employees does your factory have?

A:70

Q:Do you have any pictures of real equipment items?

A:Yes.

Q:How far is the hotel in your factory?

A:About 10 minutes.

Q:How far is your factory from the airport?

A:About 50 minutes by driving car.

Q:How long does it take from Guangzhou to your factory?

A:If you take a plane, need 3 hours.

Q:Where is your factory?

A:Taizhou, Zhejiang province.

Q:Do you provide free spare parts?

A:It depends on machine equipment.

Q:What is the applicable age range of Full Automatic Pad Printer Machine?

A:Unlimited use.

Q:Do you have a detailed and professional installation manual?

A:Yes.

Q:Do you provide samples? Free or charge?

A:Less sample is free.

Q:What is your minimum order quantity?

A:For products,MOQ is 100000pcs.For mold and machine,the MOQ is 1 sets.

Q:Are you a trading company or a manufacturer?

A:Manufacturer.

Q:How long is your delivery time?

A: Machine:30-60 days

Mold:20-60 days.

Products:depends on quantity.

Q:How many production lines does your factory have?

A:We have 20 sets of injection molding machine to product Full Automatic Pad Printer Machine.