



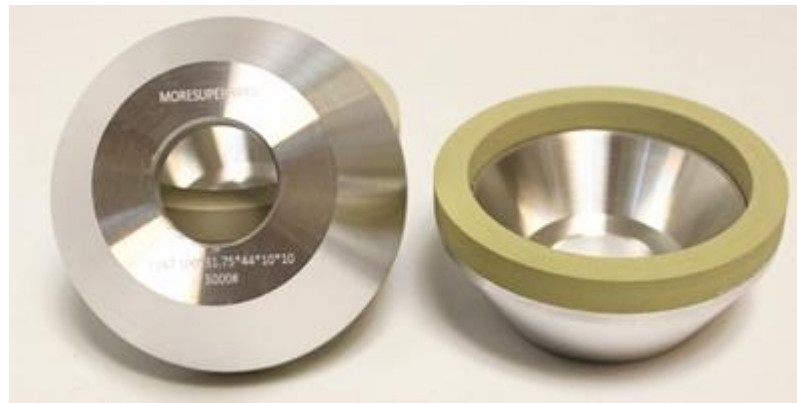
11A2 Vitrified Diamond Wheel For PCD Tools Grinding

Type: 11A2 Vitrified Diamond Wheel For PCD Tools Grinding

Grit Size: rough, medium, semi- finish grinding, finish grinding

Application: pcd tools grinding, regrind, sharpening

Wholesale 11A2 Vitrified Diamond Wheel For PCD Tools Grinding In Stock



5000# 100mm 11A2 vitrified diamond wheel for pcd

Applications of 11A2 Vitrified Diamond Wheel For PCD Tools Grinding

Especially for PCD/PCBN tools'rough,medium,semi- finish and finish grinding, regrind,sharpening

Advantages of 11A2 Vitrified Diamond Wheel For PCD Tools Grinding

- * Precision control of geometric tolerance
- * Extremely long lifetime through high adhesion strength of the diamond grain
- * Good self-sharpening
- * Superior insert edge quality
- * High cutting ability with profile retention

Specifications of 11A2 Vitrified Diamond Wheel For PCD Tools Grinding

Type	D(mm)	T(mm)	H(mm)	W(mm)	X(mm)
11A2	100	40	32 40	3 5 10 20	10
	125	40	32 40	3 5 10	10
	150	40	32 40	3 5 10 15 20	10

Grit: 325/400 W40(500#) W28(600#) W20(800#) W10(1500#) W7(2000) W5(3000#) W3.5(4000#) 6000#...

Grain Size Selection of 11A2 Vitrified Diamond Wheel For PCD Tools Grinding

Grain Size	Machining Type	Application
W40(400-500#,D35)W28(600-700#,D20)	Rough	Regrinding a blade edge profile and sharpening of much worn inserts
W20(800-1000#,D20)	Universal	Standard grain size also can get a high sharpening efficiency, good quality surfaces
W10 (1500#, D15A) W7(2000#,D15B)	Finish	Finishing grinding - getting a very good quality of machined surfaces
W5 (3000#, D7) W3.5 (4000#,D3)	Super Finish	Super finish grinding - getting a brilliant quality of machined surfaces