

SZTW909 User Manual

Demo Software Instruction

Welcome to use our products SZTW909, please read this manual carefully before using, in order to better use.

Technical Specification	2
Demo Application	2
Connect device to PC	3
Swipe card direction	4
Lo/Hi-Co magnetic cards	4
Open/Close Beep Sound	4
“ Read” magnetic cards	5
“ Copy “ Magnetic cards	6
“ Write” Magnetic cards	7
“ Compare” Magnetic Cards	8
“ Erase” Magnetic cards	9
“From File” to write card	10
Sequential write cards	11
Read cards save “to files”	12
Setting	13
Change the Log in ID and Password	13
Maintenance	13
Battery protection	13



Technical Specification


- Compatible with instructions:**100% compatible with MSR206 instruction set.
- Easy&convenience:**The built-in battery without external power supply, do not need to install the driver.
- Read-write functions:**For high/low magnetic stripe (300-4000 OE) all three rail to read and write function.
- Read- write format:**Support ISO, AAMVA DMV custom and so on the many kinds of magnetic recording format, speaking, reading and writing.
- Blind read function :** Reading card/deposit book which can realize the different standard of the blind to read.
- Stability :**Applicability, the machine is stable and reliable, error rate < 0.5
- Working life:**1 million times life read/write head
- Protocol commands:**Simple file command protocol instructions, speaking, reading and writing
- Systems:**Supports Windows 98 / XP/WISTA/Win7/win8/win10 , to provide convenient DLL secondary development

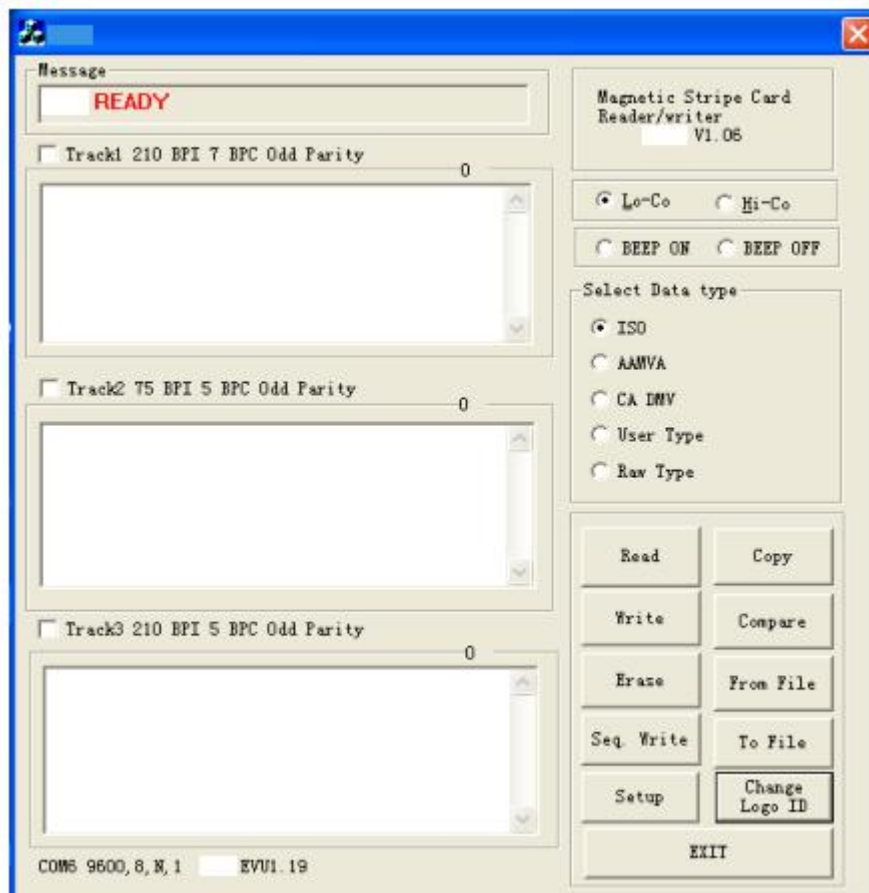
Electrical		
Power supply	5V	
Build-in Battery Capacity	600mAh	
Consumption	Read	50mA±15%
	Write	2800mA±15%
Communication	USB	
Mechanical		
Model	MSR900S	
Body material	ABS 94V	
Size	150mm(L)X50mm(W)X53mm(H)	
Weight	950g	
Color	Black	
Environment		
Operation temperature	-10℃ ~ 55 ℃	
Operating humidity	10%~85% relative humidity	
Storage temperature	-30℃~70℃	
Store humidity	10%~90% relative humidity	
Performance		
Track	1/2/3 tracks	
Recording density	1、 3 track	210BPI
	2 track	75/210BPI optional
Coercive force	Read/Write 300-4000 oe Mag card	
Operating speed	Read speed	6.3~250cm/s
	Write speed	10~100cm/s
Card thickness	PVC 0.76±0.08mm	
Error rate	Read < 0.5%、 Writer < 0.8%	
Head life	About 1,000,000 times	

Demo Application

It is widely used in the banking system, fiscal system, safety management system, member management system and related applications.

Connect device to PC

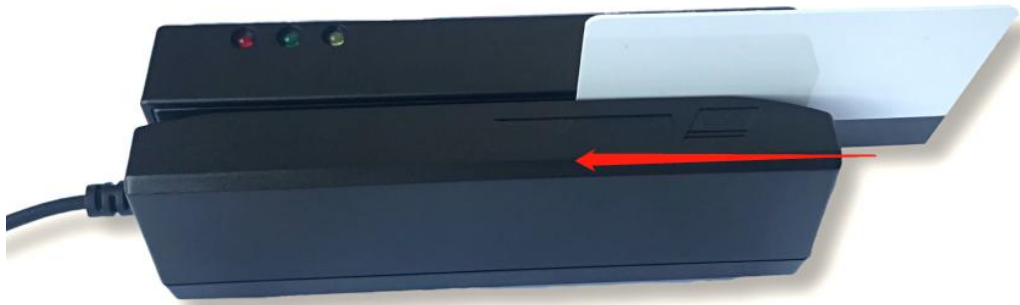
Open the disc into the drive, you can see the icon  , it is the equipment demonstration software, then Plug USB port into PC(Computer) , final Open the software interface, Click“ Confirm “, then you can use it easy as follow Picture(Note: if Connect successfully , you will see the Message“ **READY“ on the Left Corner)



(Note: if the Operating interface showed” ” no Connetct ** ”,Please Pull the Plug and USB, then install them again)

Swipe card direction

Swipe cards, make sure the magnetic stripe side of card should be the same as follow picture



Lo/Hi-Co magnetic cards

Open the Software , you will see the ‘Lo/-Co’ or “Hi-Co “Button, writing the magnetic cards, make sure the“Hi-co magnetic card” should be the chosen “Hi-Co”, “Lo-Co magnetic cards”

should be chosen “Lo-Co”



Hi-Co magnetic cards



Lo-Co magnetic cards



Open/Close Beep Sound

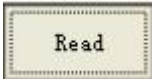
This Button can be controlled the Buzzer Valid or Invalid , you can choose it according yourself

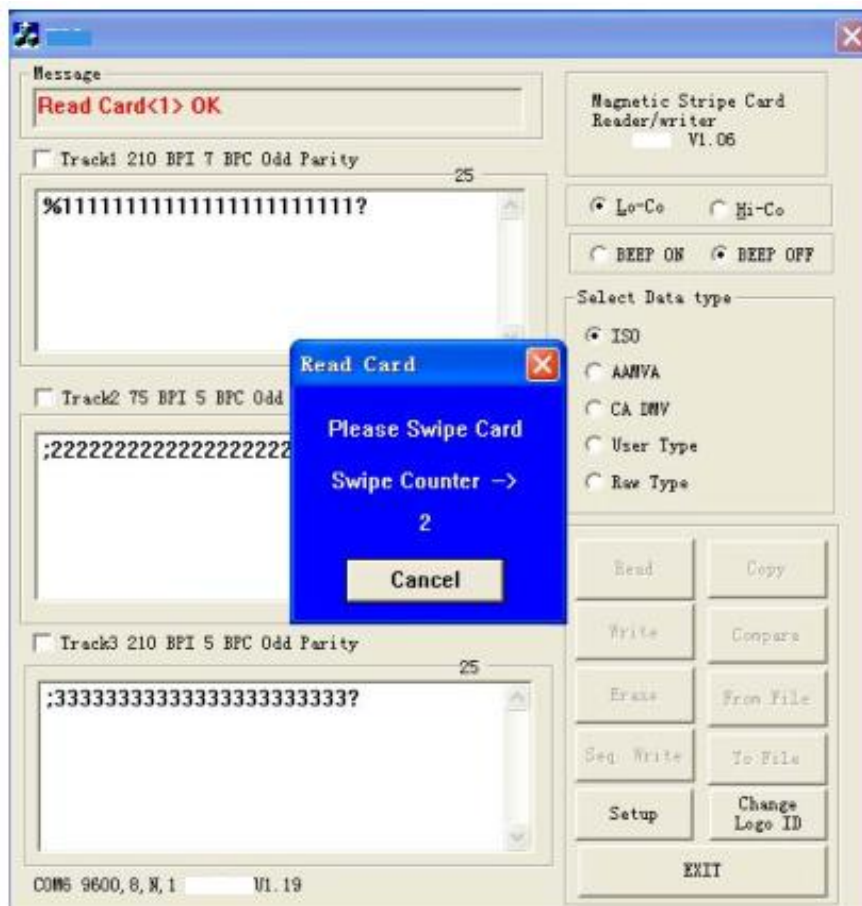
requirement.



“ Read” magnetic cards

confirm whether the Magnetic cards have any data into the magnetic cards or not, Please Click”

Read” Button , and “Read” indicator light will be lighted , then Swipe the cards, the data of the magnetic cards will be showed on the Followed Dialog Box,



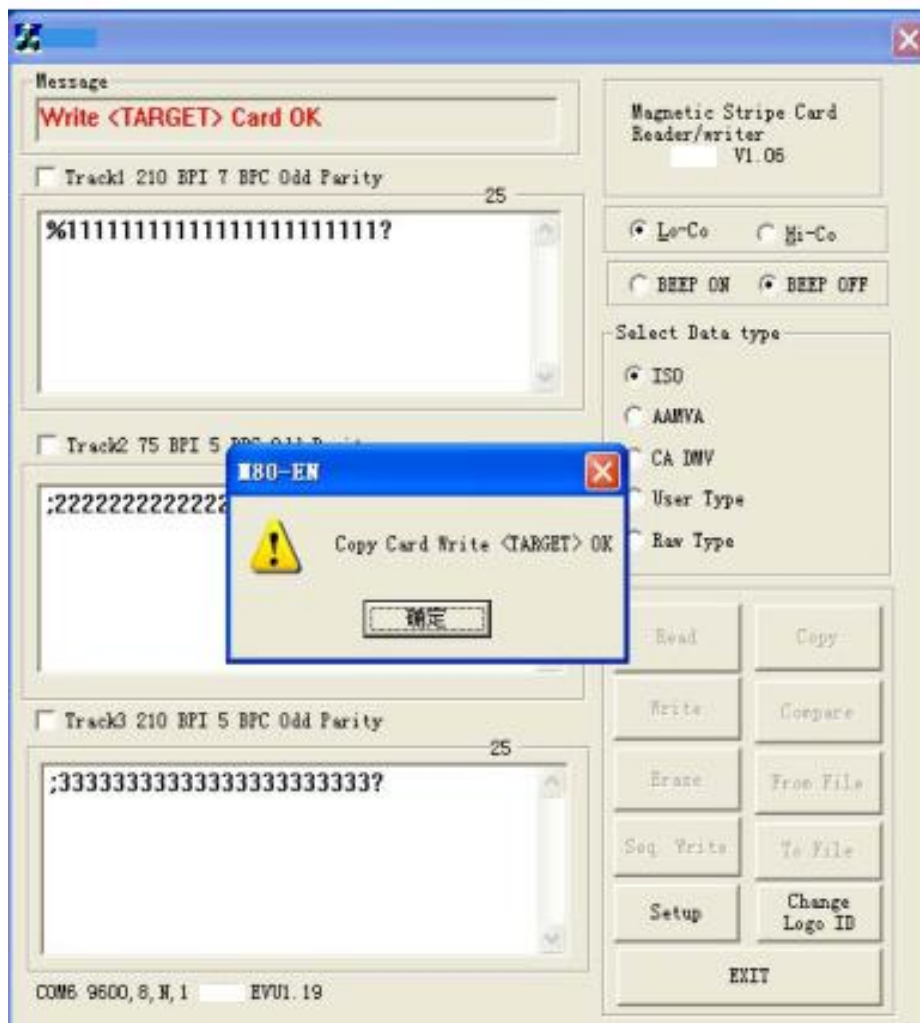
“ Copy “ Magnetic cards

Copy

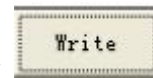
Copy one card data into another Blank magnetic cards, Please Click “Copy” Button
Swipe the data cards first, then swipe the copy cards again, it'll be showed

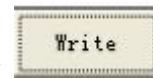


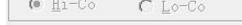
if swipe cards successfully, both of them(two cards data) will be the same exactly. If not, please try again



“ Write” Magnetic cards

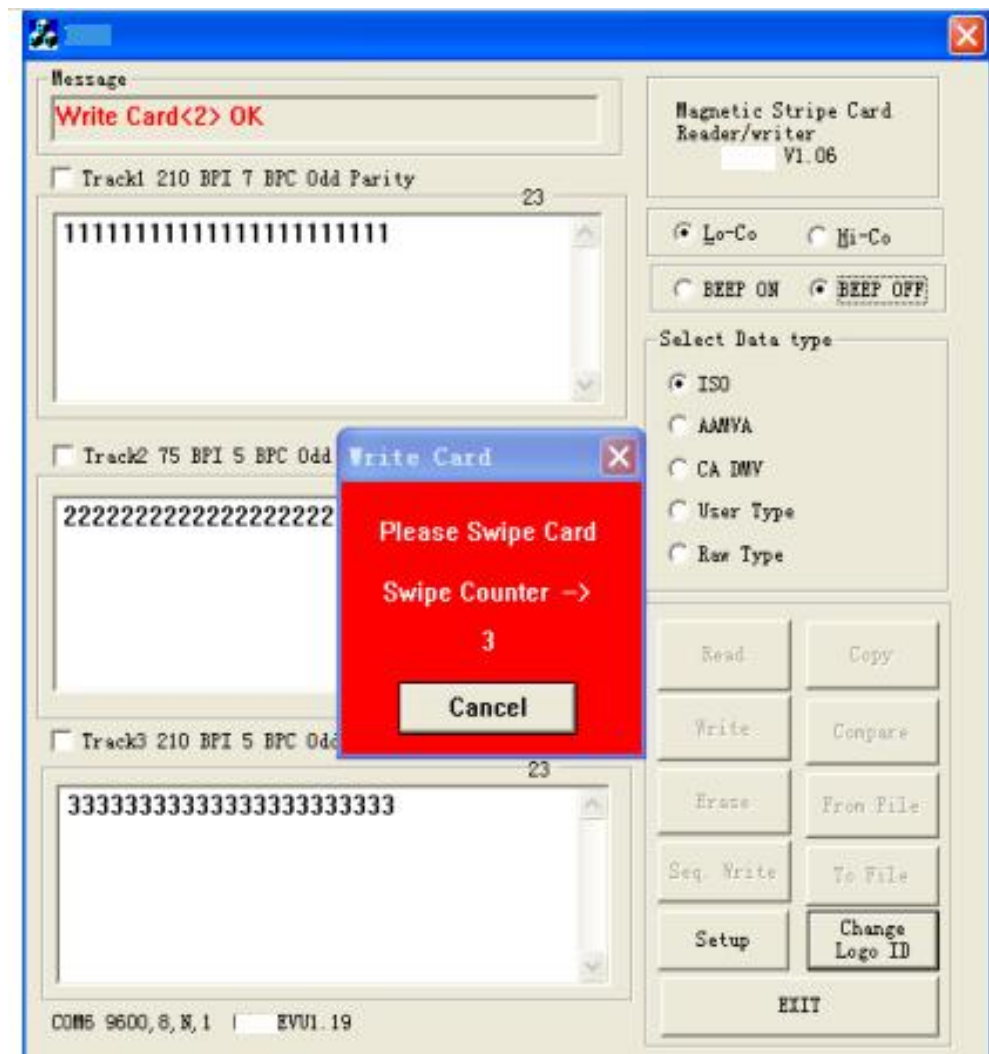


Input the needed data into the relevant Track(1&2&3) then Click “”, write the magnetic cards.

later, if showed swipe wrong, please check the “Hi-co” or “Lo-co” Button  setting correct or not and the input data should be according to ISO standard or other, if Swipe




correct, the top left will be showed

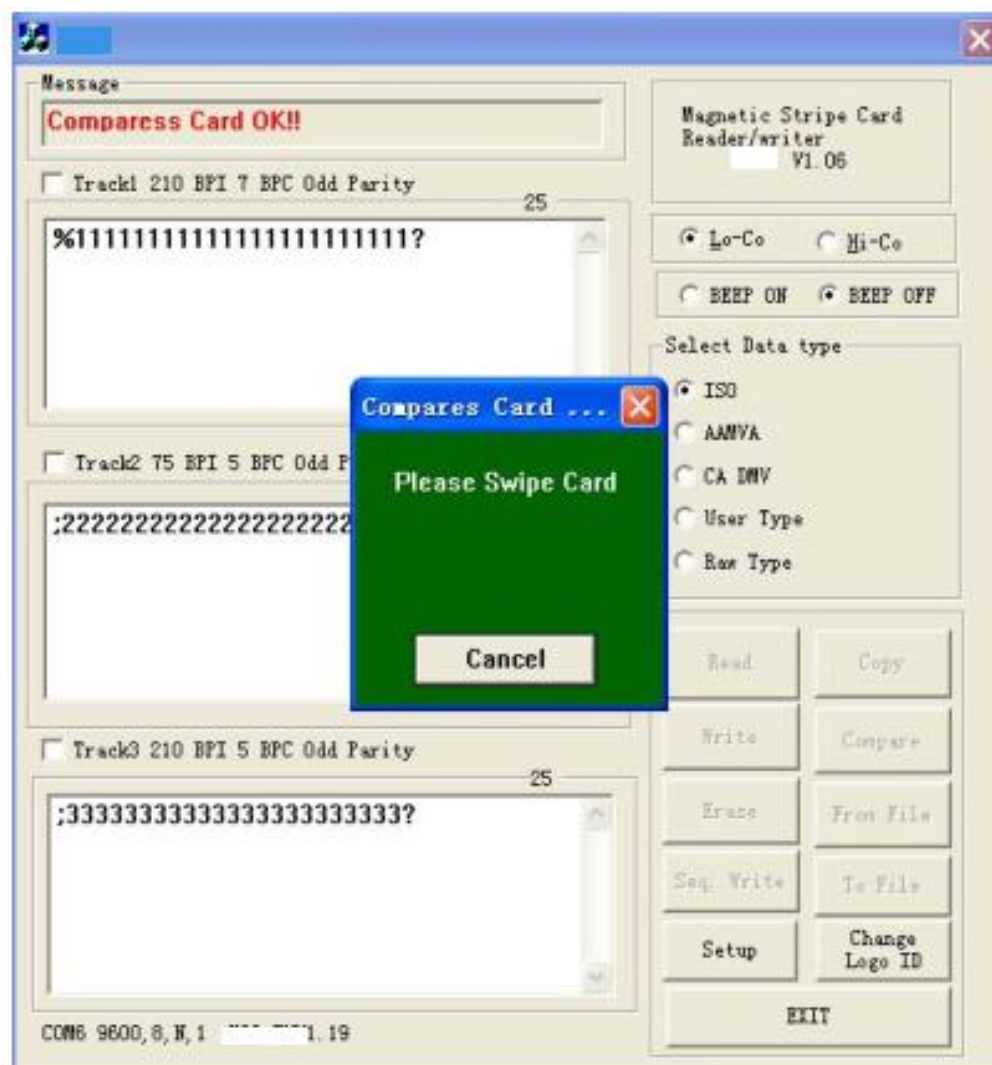


“ Compare” Magnetic Cards

Comparing both of cards data are in harmony with each other or not, Please Click

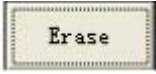




” Button, then showed ,Swipe the needed compare cards again, if the Message Box showed follow message(the compare cards successfully)

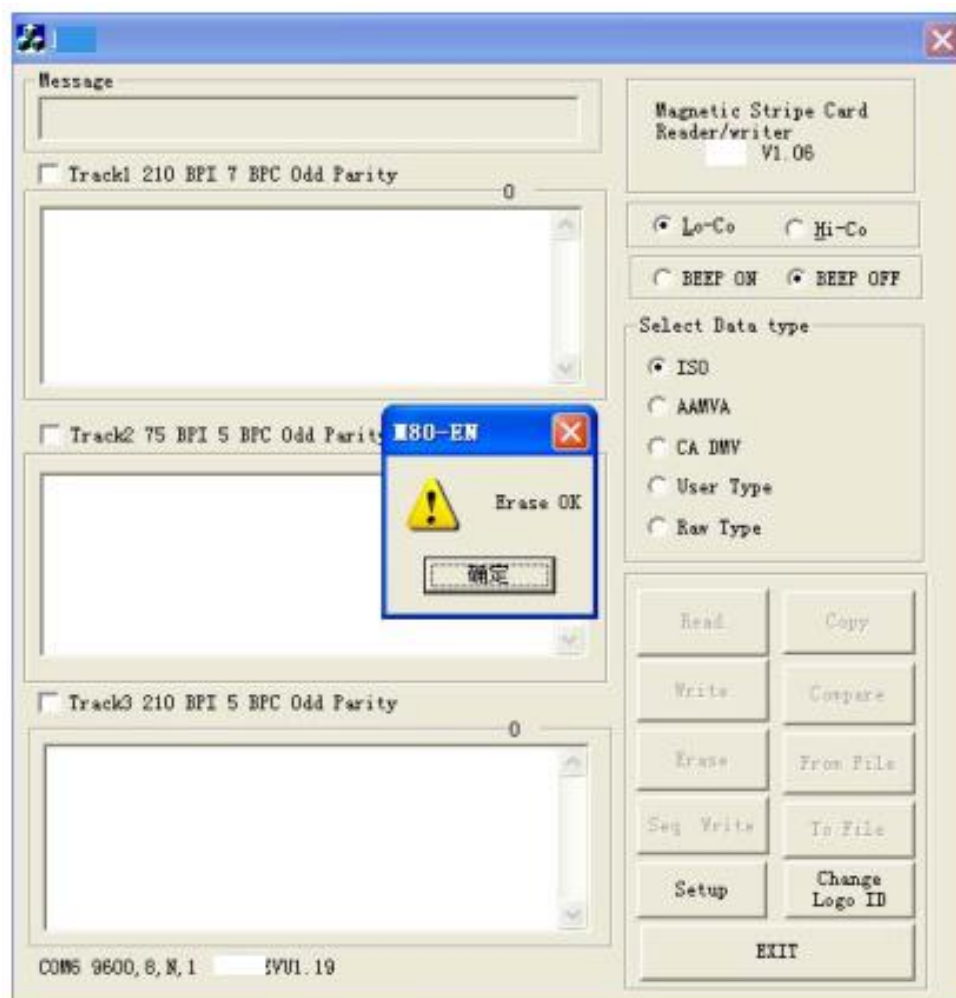


“Erase” Magnetic cards

If you don't need any data of the magnetic cards, Please choose “Erase” the data of

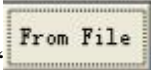
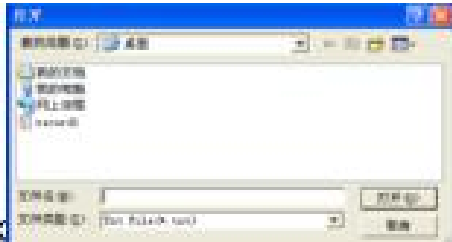
cards , then Pop-Up Windows , please erase each Track

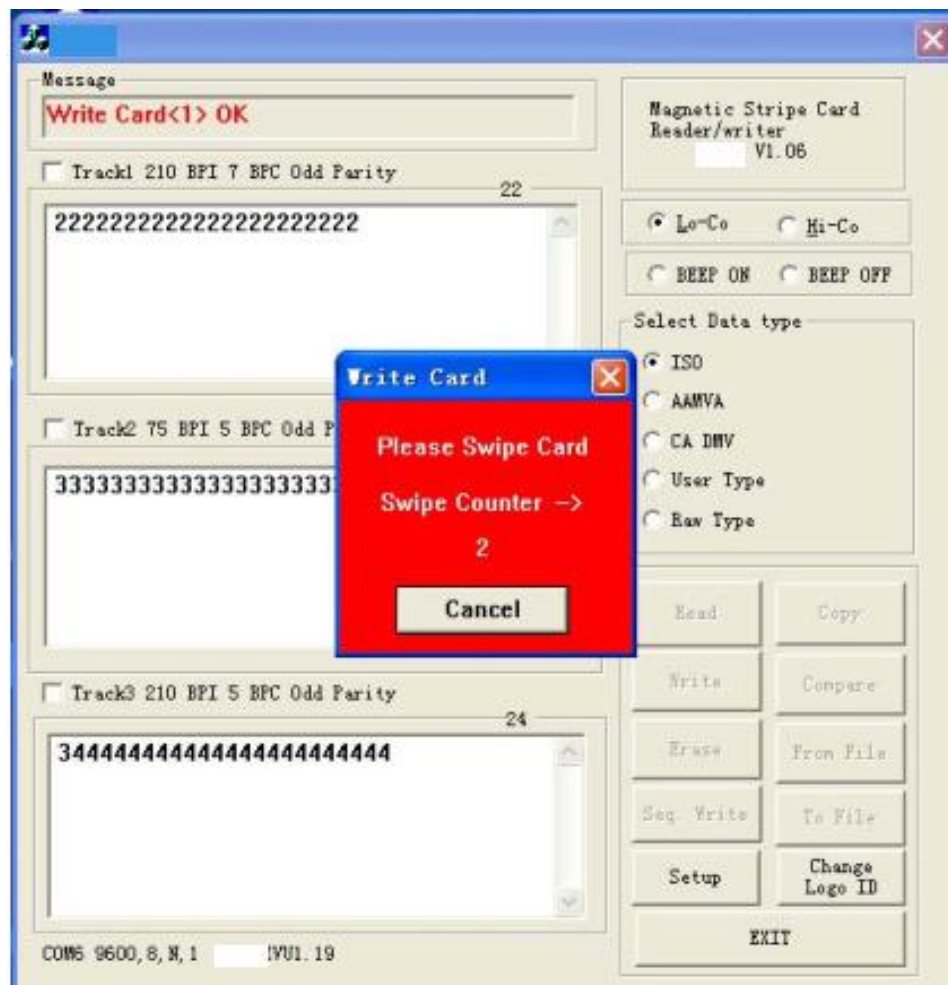
message required, Click” Ok”, if showed the picture , that mean Erase cards successfully.



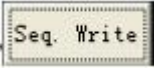
“From File” to write card

If Data doesn't need edited by Yourself. You can get them from the Computer Files(data

files),Click “”, Open the Dialog Box  , Choose the files you needed, then swipe card later. As followed picture:

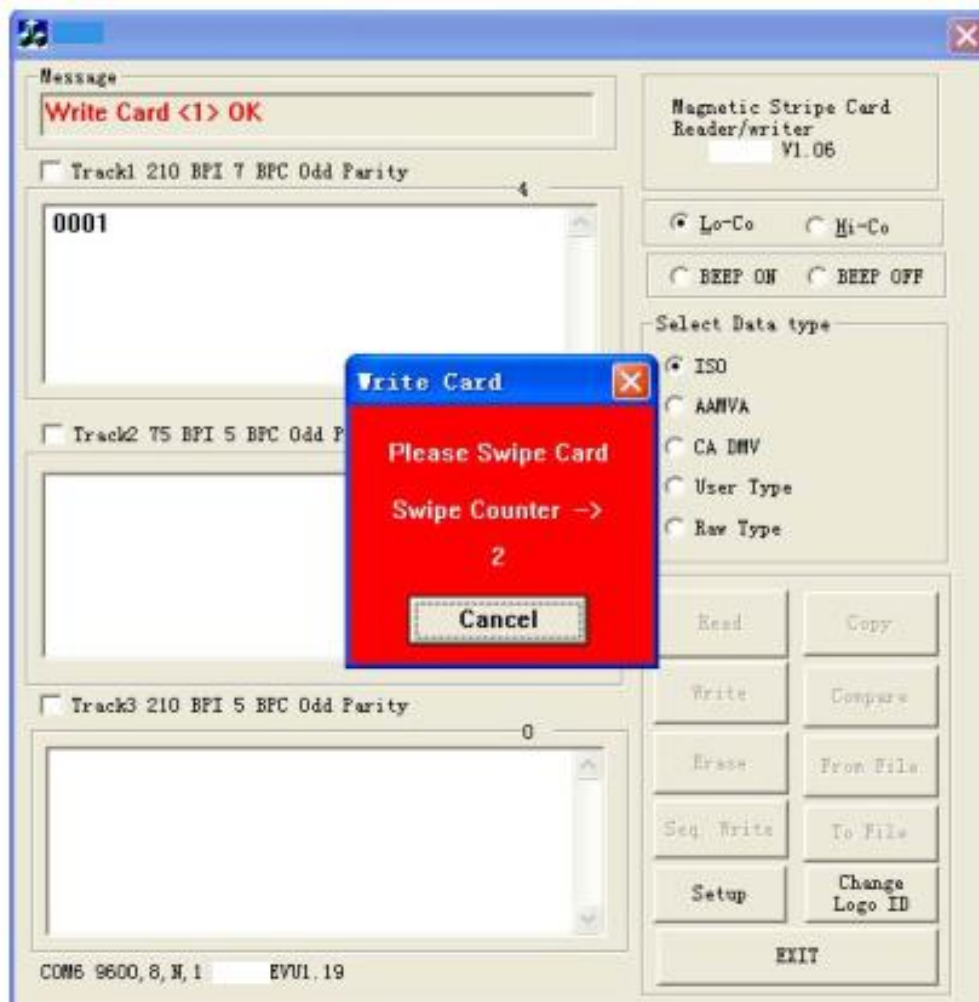


Sequential write cards

According to your need to Click “”, Pop-up the Dialogue Box



Choose the track you need to Sequential write. Then swipe cards .the data will be wrote into the cards sequential.



Setting

Setting the relevant parameters according your required

Change the Log in ID and Password

Change another New Password, it can avoid somebody to change your data, so that you can protect the relevant important information

Maintenance

The Magnetic Stripe Card Reader/Writer is a advanced high-tech products, Please take care of it carefully, Long-time usage, if come across the followed problems, we can take some measures.

- Some Magnetic Powder on the surface of the magnetic head ,Read/Write card success rate declines,
-please use the Cleaning card to clean the magnetic head several times.
- Application program can't connected with Magnetic Swipe Reader/Writer.
-Communication not correct, Check the data cable is broken or not and Confirm the parameters setting;
-Checking the USB Driver is broken or not, re-install the Driver again.
-Checking the USB Port whether connect successfully or not;
-Checking the External Power Supply is normal or not

Battery protection

1. Battery charges 30 hours from no power to full power. The device is full power for the beginning
2. Full power can be written 1000 times continuously, resistance times will be more.
3. Devices connected to USB or 5V adapters can be charged. When the power of the device is too low to start the card writing function, the device will have flashing lights. It can not start the card writing function. It must reach the minimum threshold to write the card. This function is to protect the battery. Some similar products without this function will have the risk of damage caused by excessive discharge of the battery.