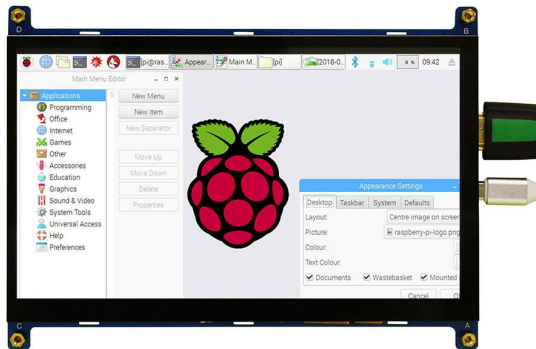




7 inch HDMI LCD Display For Raspberry pi

Zhaopin Tech is a professional manufactures of 7 inch HDMI LCD Display. Our professional expertise in manufacturing 7 inch HDMI LCD Display has been honed over the past 10+ years. You can rest assured to buy 7 inch HDMI LCD Display For Raspberry pi from our factory and we will offer you the best after-sale service and timely delivery. 7 inch LCD Display, 800x480 resolution, Capacitive Touch Screen LCD, HDMI interface for displaying, Micro-USB port for the touch panel and power, Designed for Raspberry Pi, BB Black, Banana Pi Nano Pi, etc;The following is about 7 inch HDMI LCD Display related, I hope to help you better understand 7 inch HDMI LCD Display



Raspberry Pi 7 "hd capacitive touch screen

Product Description

Product instruction of the 7 inch HDMI LCD Display For Raspberry pi

We supply 7 inch HDMI LCD Display 800x480 which is 800x480, 7 inch Capacitive Touch Screen LCD, HDMI interface, supports various systems.

Product Specification of the 7 inch HDMI LCD Display 800x480

Item of general information	Contents	Unit
LCD Display Size(Diagonal)	7	inch
LCD Display Type	TFT/TRANSMISSIVE	-
LCD Display Mode	Normally White	-
Recommended Viewing Direction	12	o'clock
Gray inversion Direction	6	o'clock
Module size (WxHxT)	165.30x121.00x7.75	mm
Active area (WxH)	154.08x85.92	mm
Number of pixels(Resolution)	800RGBx480	pixel
Pixel pitch (WxH)	0.1926x0.179	mm
Color Pixel Arrangement	RGB Stripe	-

LCD Driver IC	TBD	-
Module Interface Type	HDMI(Display)&USB(touch)	-
System Support	Android/Win7/Win8	
Module Input voltage	5.0V	V
Module Power consumption	TBD	mW
Color Numbers	16.7M	-
Backlight Type	White LED	-

Product Feature and Application of the 7 inch HDMI LCD Display 800x480

7 inch LCD screen, 800x480 hardware resolution;

Capacitive touch control;

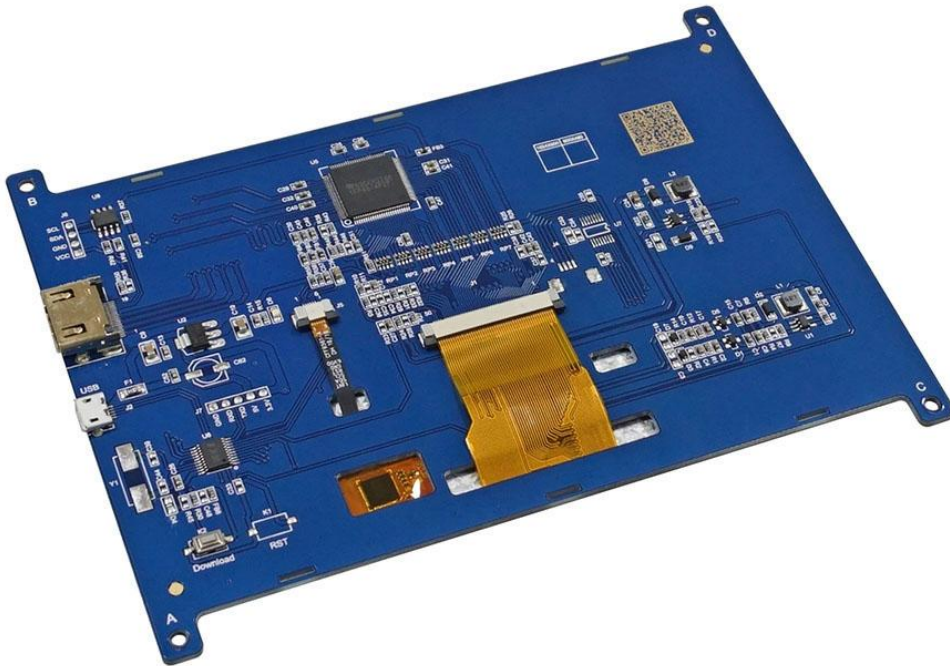
Supports popular mini PCs such as Raspberry Pi, BB Black, as well as general desktop computers;

When works with Raspberry Pi, supports Raspbian/Ubuntu/Kali/Retropie/WIN10 IOT, driver free;

When work as a computer monitor, supports Windows 10/8.1/8/7, five-points touch, and driver free;

Product Pictures of the 7 inch HDMI LCD Display 800x480





Product Advantage of the 7 inch HDMI LCD Display 800x480

USB power supply, USB is both power supply interface and touch interface;

Mature HDMI decoding chip with stable performance;

The capacitive touch screen adopts the structure of G+G with fully extinction tempered glass, which supports 5 touch points mostly and would make the customer experience well;

Windows system would be self-adaption, customer only need to configure HDMI output resolution for other systems . It would greatly save time for customers debugging LCD driver, and customers quickly develop their own products conveniently.

PCB adopts double-sided gold sinking process with stable and reliable performance.

Positioning holes are reserved around the PCB to facilitate customer installation and fixation.

Product Quality Control of the 7 inch HDMI LCD Display 800x480

Shenzhen Zopin Technology Co., LTD ,

Phone:+86-755-27593403

E-mail: Frank@zopin-lcd.com

Before package and shipment, the original products will be tested one by one by our technicians and QC team to make sure the quality of every product is good. We will test goods strictly according to our standard inspection before shipment.

Accessories of the 7 inch HDMI LCD Display 800x480

7 inch HDMI LCD x1

1M HDMI cable x1

1M USB type A plug to micro B plug cable x1

Delivery, shipping and Sevring of 7 inch HDMI LCD Display 800x480

- 1) . Payment Terms: T/T, Western Union.
- 2). Shipping: Prompt delivery by UPS, EMS, DHL, TNT, FedEx, or by air.
- 3). Delivery time: 3 days for goods in stock, 3-4 weeks for mass production goods.
- 4). Packaging Details: Packed in anti-static bags with foam box to ensure safety in transportation.
- 5). Delivery Details: 1 to 30 days. The delivery fee is up to the weight and volume of the products.
- 6). Samples: Our company offers samples for quality test or other business purposes, but we kindly ask you to pay for samples and the freight.

FAQ

Q: What is the MOQ?

A: Generally if you choose the different products, our minimum order qty also will be different.

Q: What about the delivery time?

A: The LCD products need 3-4 weeks to be made after receive deposit.

Q: Does your product have any warranty?

A: Yes, we offer 12 months warranty for our products. Damage due to misuse, ill treatment and unauthorized modifications and repairs are not covered by our warranty.

Q: What's your payment method?

A: We usually accept the payment methods include T/T, Western Union. 50-100% deposit in advance and balance before shipping upon the payment amount. Buyer can choose which payment ways that you accept.

Q: What's your shipping method?

A: We provide comprehensive shipping methods.

For small quantity orders we ship by UPS Air-Express, or DHL/FEDEX/TNT/EMS Express service, it is safe and fast.

For large quantity orders we ship by buyer's cargo agent in China, we can also ship by Air transportation or sea transportation.

Q: Do you offer custom solution?

A: Yes, we can offer custom solution if standard products couldn't meet buyer' requirements.

Latest News

Other sizes HDMI LCD display are in process.

Recommendations

- 4.3 inch HDMI LCD Display
- 5 inch HDMI LCD Display
- 10.1 inch HDMI LCD Display