



### **7 inch 800x480 LCD Touch Screen**

7 inch 800x480 LCD Touch Screen is 7 inch TFT LCD screen, 800x480 resolution, driver IC TBD, 50 pins FPC, RGB interface, 6 O'Clock viewing direction, white LED backlight and capacitive touch panel (6Pins FPC).

### **Product Description**

#### **Product instruction of the 7 inch 800x480 LCD Touch Screen**

We supply 7 inch 800x480 LCD Touch Screen which is a transmissive type a-Si TFT-LCD (amorphous silicon thin film transistor liquid crystal display) module, which is composed of a TFT-LCD panel, a driver circuit, a backlight unit and capacitive touch panel(6 pins FPC). The panel size is 7 inch and the resolution is 800x480. the panel can display up to 16M colors. The LCM can be easily accessed by RGB interface.

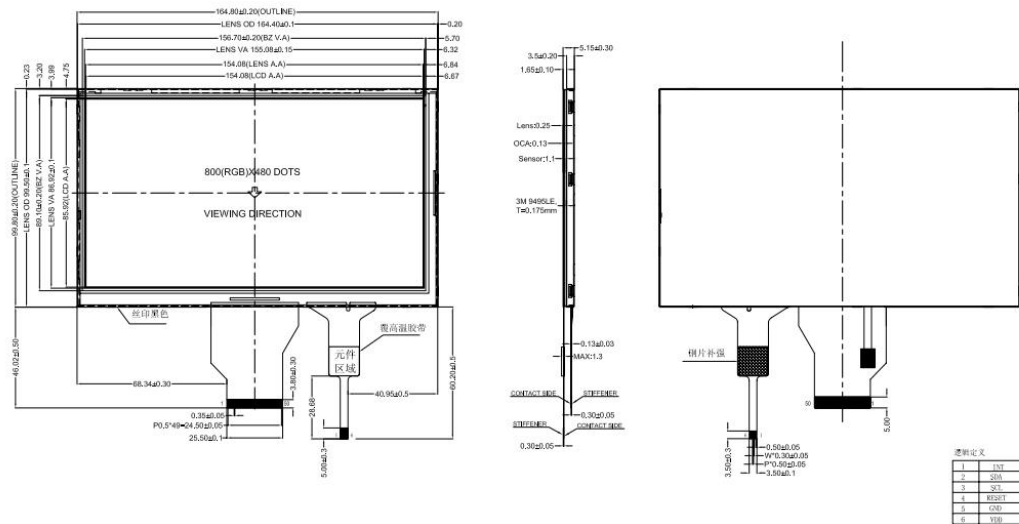
#### **Product Specification of the 7 inch 800x480 LCD Touch Screen**

No	Item	Specification	Remark
1	LCD Type	Active matrix TFT, Transmissive type	
2	Screen Size	7inch	
3	Resolution	800xRGBx480	
4	Color Number	16M	
5	Color Arrangement	RGB vertical stripes	
6	Driver IC	--	
7	Back Light	White LEDx21	
8	Viewing Direction	6	O'clock

9	Interface	24 bit RGB with Serial Interface	
10	Interface Number	50 PINS FPC	
11	TouchPanel	Capacitive	6 pins FPC

Parameter	Specifications	Unit
Outline dimensions	164.90(W)x100.00 (H)x5.2 (T) (LCM,no include FPC)	mm
Active area	154.08(W) x85.92(H)	mm
Resolution	800xRGBx480 dots	-

### Production Drawing of the 7 inch 800x480 LCD Touch Screen



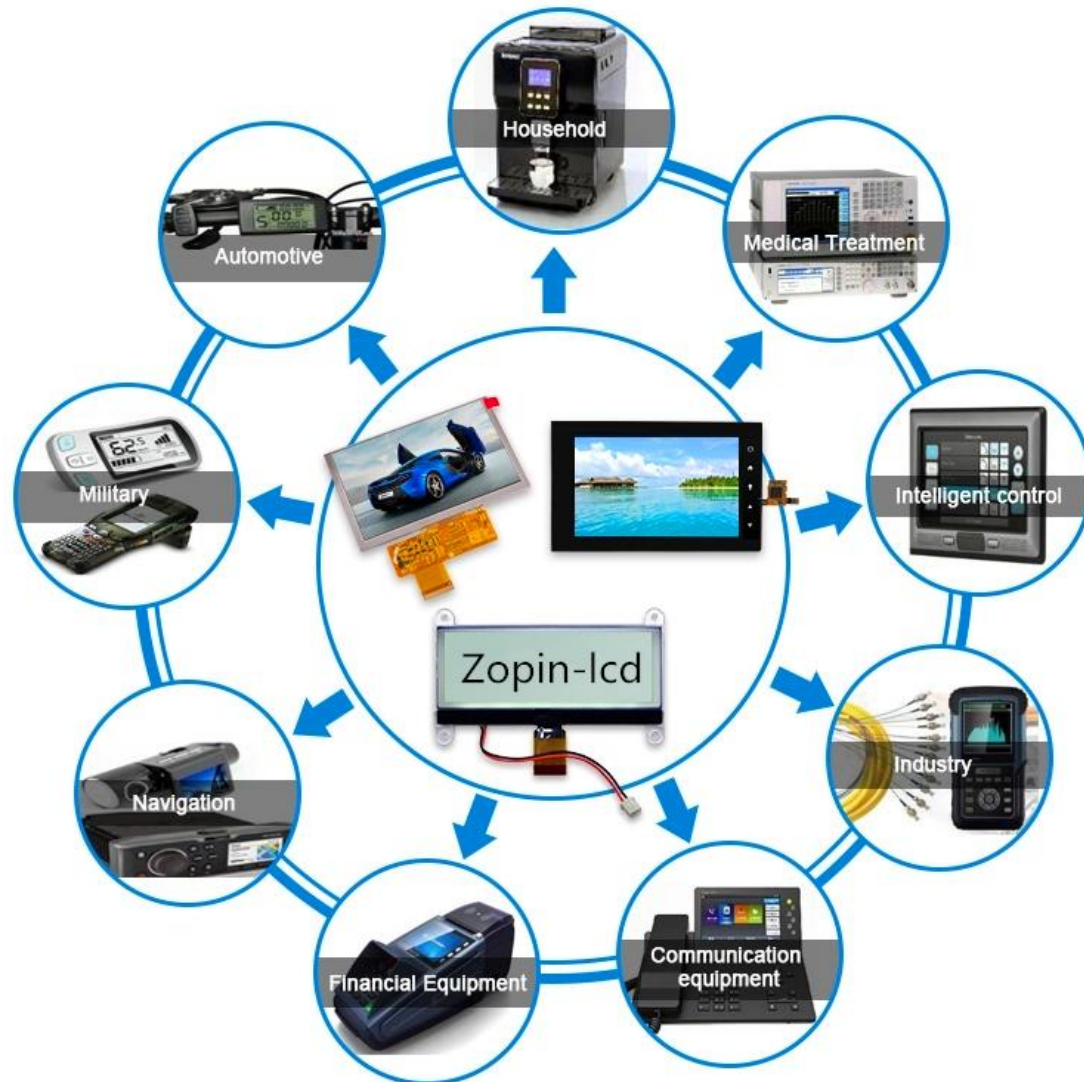
### Production PINS Definition of the 7 inch 800x480 LCD Touch Screen

PIN NO.	Symbol	I/O	Description
1-2	LED-A	P	Power for LED backlight anode
3-4	LED-K	P	Power for LED backlight cathode
5	GND	P	Power ground
6	VCOM	I	Common Voltage
7	DVDD	P	Power supply for digital block.

8	MODE	I	DE / SYNC mode select.	
9	DE	I	Input data enable control.	
10	VSD	I	Vertical sync signal	
11	HSD	I	Horizontal sync signal	
12-19	B7~B0	I	Blue data	
20-27	G7~G0	I	Green data	
28-35	R7~R0	I	Red data	
36	GND	P	Power ground	
37	DCLK	I	Clock for input data	
38	GND	P	Power ground	
39	SHLR	I	Source shift direction control.	
40	UPDN	I	Gate scan direction control	
41	VDDG(VGH)	P	Power supply for gate drive output high	
42	VEEG (VGL)	P	Power supply for gate drive output low	
43	AVDD	P	Power supply for analog block. reset.	Global
44	RSTB	I	Hardware global reset. Low active.	
45	NC	--	NC	
46	VCOM	I	Common Voltage	
47	DITH	I	Dithering function enable control.	
48	GND	P	Power ground	
49-50	NC	--	NC	

## Product Feature and Application of the 7 inch 800x480 LCD Touch Screen

## Product Application



### Product Quality Control of the 7 inch 800x480 LCD Touch Screen

Before package and shipment, the original products will be tested one by one by our technicians and QC team to make sure the quality of every product is good.

We will test goods strictly according to our standard inspection before shipment.

### Delivery, shipping and Sevring of the 7 inch 800x480 LCD Touch Screen

- 1). Payment Terms: T/T, Western Union.
- 2). Shipping: Prompt delivery by UPS, EMS, DHL, TNT, FedEx, or by air.
- 3). Delivery time: 3-7 days for goods in stock, 3-4 weeks for mass production goods.
- 4). Packaging Details: Packed in anti-static bags with foam box to ensure safety in

Shenzhen Zopin Technology Co., LTD,  
Phone: +86-755-27593403  
E-mail: Frank@zopin-lcd.com

transportation.

5). Delivery Details: 1 to 30 days. The delivery fee is up to the weight and volume of the products.

6). Samples: Our company offers samples for quality test or other business purposes, but we kindly ask you to pay for samples and the freight.

**PACKAGE & LOGISTICS**



VACANCY TRAY ADHESIVE TAPE



SHOCKPROOF & WATERPROOF



COMPLETE PACKAGE



TRANSPORTATION



SIGN FOR

**Shipping&Payment**



**FAQ**

**Q: What is the MOQ?**

A: Generally if you choose the different products, our minimum order qty also will be different.

**Q: What about the delivery time?**

A: The LCD products need 3-4 weeks to be made after receive deposit.

**Q: Does your product have any warranty?**

A: Yes, we offer 12 months warranty for our products. Damage due to misuse, ill treatment and unauthorized modifications and repairs are not covered by our warranty.

**Q: What's your payment method?**

A: We usually accept the payment methods include T/T, Western Union. 50-100% deposit in advance and balance before shipping upon the payment amount. Buyer can choose which payment ways that you accept.

**Q: What's your shipping method?**

A: We provide comprehensive shipping methods.

For small quantity orders we ship by UPS Air-Express, or DHL/FEDEX/TNT/EMS Express service, it is safe and fast.

For large quantity orders we ship by buyer's cargo agent in China, we can also ship by Air transportation or sea transportation.

**Q: Do you offer custom solution?**

A: Yes, we can offer custom solution if standard products couldn't meet buyer's requirements.

**Latest News**