



### 2.8 inch 240x320 TFT LCD

2.8 inch 240x320 TFT LCD is 2.8 inch TFT LCD screen, 240x320 resolution, driver IC ST7789V, 37 pins FPC, 16-bit MCU interface, 12 O'Clock viewing direction, white LED backlight. The following is about 2.8 inch 240x320 TFT LCD related, I hope to help you better understand 2.8 inch 240x320 TFT LC

## Product Description

### Product instruction of the 2.8 inch 240x320 TFT LCD

We supply 2.8 inch 240x320 TFT LCD which is a transmissive type a-Si TFT-LCD (amorphous silicon thin film transistor liquid crystal display) module, which is composed of a TFT-LCD panel, a driver circuit and a backlight unit, The panel size is 2.8 inch and the resolution is 240x320. the panel can display up to 262K colors. The LCM can be easily accessed by micro-controller via MCU interface.

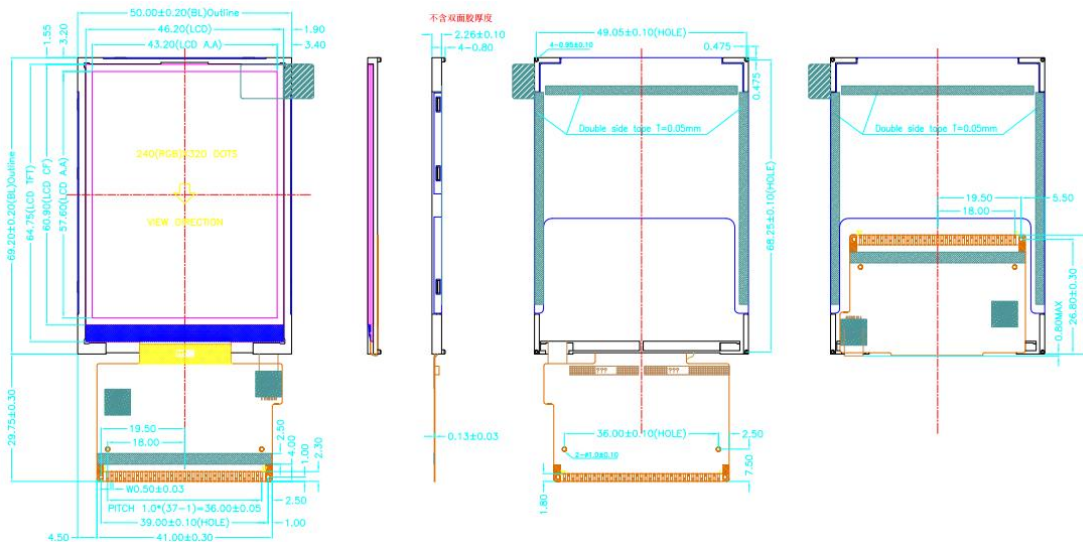
### Product Specification of the 2.8 inch 240x320 TFT LCD

No	Item	Specification	Remark
1	LCD Type	TFT/TRANSMISSIVE	
2	Screen Size	2.8inch (diagonal)	
3	Resolution	240xRGBx320	
4	Color Number	262K TFT	
5	Color Arrangement	RGB-stripe	
6	Driver IC	ST7789V	
7	Back Light	White LED*4	
8	Viewing Direction	12	O'Clock

9	Interface	MCU 16bit	
10	Surface Treatment	UV Cut	
11	touch panel	N/A	

Parameter	Specifications	Unit
Outline dimensions	50.00(W)x69.20 (H)x2.30(T) (LCM,no include FPC)	mm
Viewing area	44.00x58.4	mm
Active area	43.20(W) x57.60(H)	mm
Resolution	240xRGBx320 dots	-
Dot size	0.18x0.18	mm
Luminance value	-	cd/m <sup>2</sup>

### Production Drawing of the 2.8 inch 240x320 TFT LCD



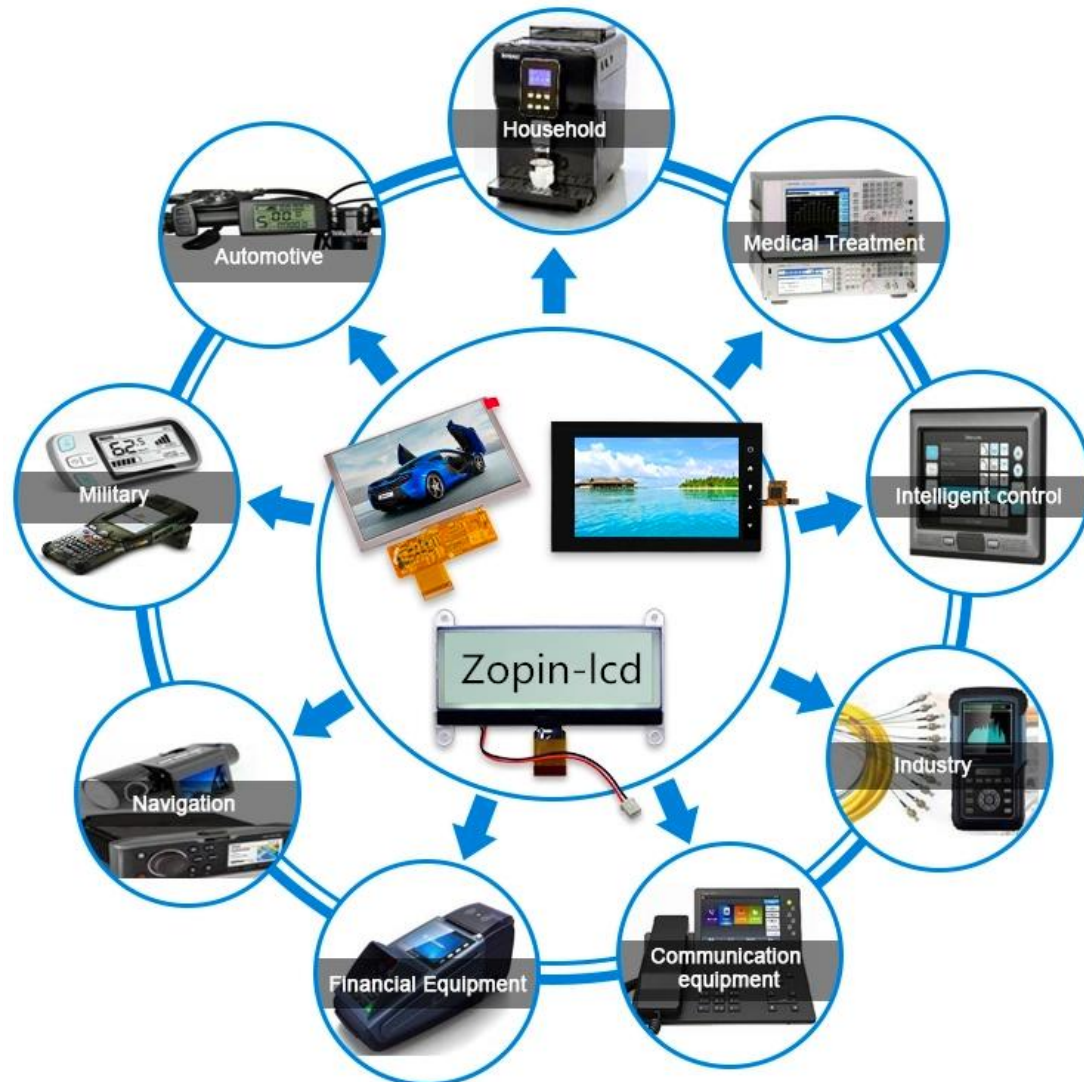
### Production PINS Definition of of the 2.8 inch 240x320 TFT LCD

PIN NO.	Symbol	I/O	Description
1~4	DB0-DB3	I/O	Data Bus
5	GND	P	Ground

6	VCC1	P	Digital IO Pad power supply(1.8V/2.8V)
7	/CS	I	Chip select pin
8	RS	I	Command and Data select pin
9	/WR	I	Write enable pin
10	/RD	I	Read enable pin
11	NC	I	NC
12	XR	I	Touch panel connect PIN
13	YD	I	Touch panel connect PIN
14	XL	I	Touch panel connect PIN
15	YU	I	Touch panel connect PIN
16	LEDA	BL	POWER SUPPLY Anode pin of backlight
17-20	LEDK1-4	BL	POWER SUPPLY Cathode pin of backlight
21	NC	NC	NC
22	DB4	I/O	Data Bus
23-30	DB8-DB15	I/O	Data Bus
31	/RESET	I	Reset pin.
32	VCI	P	Analog power supply
33	VCC2	P	Analog power supply
34	GND	P	Ground
35-37	DB5-DB7	I/O	Data Bus

### Product Feature and Application of the 2.8 inch 240X320 TFT LCD

## Product Application



### Product Inspection of the 2.8 inch 240x320 TFT LCD

Before package and shipment, the original products will be tested one by one by our technicians and QC team to make sure the quality of every product is good.

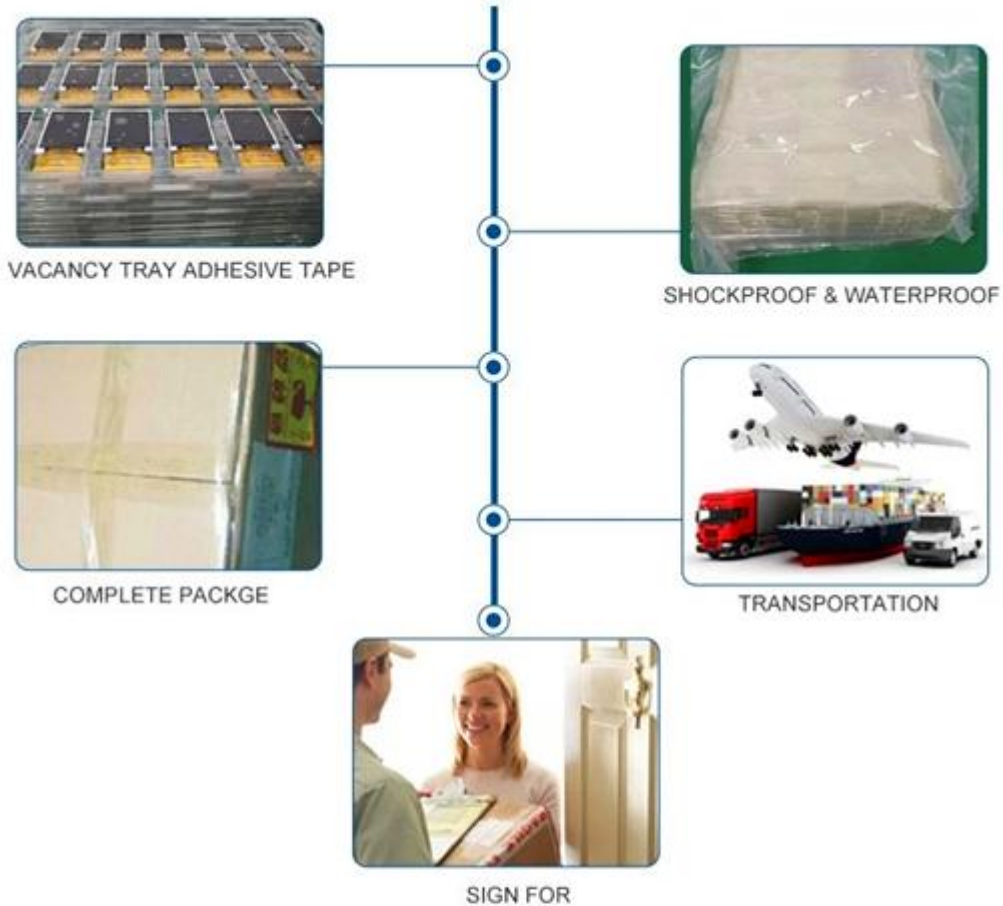
We will test goods strictly according to our standard inspection before shipment.

### Delivery, shipping and Severing of the 2.8 inch 240x320 TFT LCD

- 1). Payment Terms: T/T, Western Union.
- 2). Shipping: Prompt delivery by UPS, EMS, DHL, TNT, FedEx, or by air.
- 3). Delivery time: 3-7 days for goods in stock, 3-4 weeks for mass production goods.
- 4). Packaging Details: Packed in anti-static bags with foam box to ensure safety in transportation.

- 5). Delivery Details: 1 to 30 days. The delivery fee is up to the weight and volume of the products.
- 6). Samples: Our company offers samples for quality test or other business purposes, but we kindly ask you to pay for samples and the freight.

## PACKAGE & LOGISTICS



## Shipping&Payment



## FAQ

**Q: What is the MOQ?**

A: Generally if you choose the different products, our minimum order qty also will be different.

**Q: What about the delivery time?**

A: The LCD products need 3-4 weeks to be made after receive deposit.

**Q: Does your product have any warranty?**

A: Yes, we offer 12 months warranty for our products. Damage due to misuse, ill treatment and unauthorized modifications and repairs are not covered by our warranty.

**Q: What's your payment method?**

A: We usually accept the payment methods include T/T, Western Union. 50-100% deposit in advance and balance before shipping upon the payment amount. Buyer can choose which payment ways that you accept.

**Q: What's your shipping method?**

A: We provide comprehensive shipping methods.

For small quantity orders we ship by UPS Air-Express, or DHL/FEDEX/TNT/EMS Express service, it is safe and fast.

For large quantity orders we ship by buyer's cargo agent in China, we can also ship by Air transportation or sea transportation.

**Q: Do you offer custom solution?**

A: Yes, we can offer custom solution if standard products couldn't meet buyer's requirements.

## Latest News