

# Test Report

Report No.: CTT180531546EN

Date: May. 16, 2018

Page 1 of 5

**Applicant:** NINGBO ZHENHAI AIDISEN TOURISM PRODUCTS CO.,LTD

**Address:** 3FLOOR,B BUILDING,NO.219,DONGSHENG ROAD,ZHENHAI NINGBO CHINA

The following merchandise was (were) submitted and identified by client as:

**Sample Name:** 300D cationic double color cloth.

**Sample Received Date:** May. 15, 2018

**Completed Date:** May. 16, 2018

**Test Result(s):** Please refer to next page(s).

## Test Requested and Conclusion(s):

No.	Test Sample	Standard and Requirement	Conclusion(s)
1	Tested materials of submitted samples	California Proposition 65, Alameda Superior Court, Case No. RG 09-459448 - Total Lead (Pb)	PASS (Please refer to "N" note of the next page)
2	Tested materials of submitted samples	Total Cadmium (Cd)	DATA
3	Tested materials of submitted samples	California Proposition 65, San Francisco Superior Court, Case No.CGC-10-497729 - Phthalates	PASS (Please refer to "N" note of the next page)

Signed for and on Behalf of CTT



Frank / Lab supervisor

Consumer Testing Technology Co., Ltd.



This test report is issued by the company subject to its General Conditions of Services printed overleaf or available on request and accessible at [www.cttlab.com](http://www.cttlab.com). Attention is drawn to the limitations of liability, indemnification and jurisdictional issues defined therein. Unless otherwise stated the results shown in this report refer only to the sample(s) tested. Without prior written permission of the company, this test report cannot be reproduced, except in full. Any inquiry about this report, please raise from the date of receipt of the report within 30 days, overdue will not be accept. Items marked with "n" means they are not accredited by CNAS, "s" means the item of subcontractor. This report is not in the accredited scope of CMA and cannot be as domestic social impartiality proof data.



**Test Result(s):**

CP65, Alameda Superior Court, Case No. RG 09-459448 - Total Lead (Pb)

Method:

Metal - With reference to CPSC-CH-E1001-08.3

Nonmetal - With reference to CPSC-CH-E1002-08.3

Surface coating - With reference to CPSC-CH-E1003-09.1, analyzed by Atomic Absorption Spectroscopy (AAS) or Inductively Coupled Plasma Optical Emission Spectroscopy (ICP-OES).

Material No.	Material Type	Limit (mg/kg)	Result (mg/kg)	Conclusion
1 <sup>N</sup>	d	300	19	PASS

Material Type:

- a. Paints and surface coatings.
- b. PVC components.
- c. Leather (including composited leather) components.
- d. Materials or components other than a-c.

- Note:**
1. mg/kg = milligram per kilogram (ppm).
  2. N.D. = Not Detected (< RL).
  3. RL (Reporting Limit) = 10 mg/kg.
  4. "N" = This data is obtained from composite testing on more than one materials, it is possible that result obtained from individual testing on any one of the materials is substantially higher. Please be cautious when using this data for compliance evaluation.

Total Cadmium (Cd) <sup>n</sup>

Method:

Metal – With reference to CPSC-CH-E1001-08.3

Nonmetal – With reference to CPSC-CH-E1002-08.3

Surface coating – With reference to CPSC-CH-E1003-09.1, analyzed by Atomic Absorption Spectroscopy (AAS) or Inductively Coupled Plasma Optical Emission Spectroscopy (ICP-OES).

Material No.	Result (mg/kg)
1 <sup>N</sup>	5

- Note:**
1. mg/kg = milligram per kilogram (ppm).
  2. N.D. = Not Detected (<RL).
  3. RL (Reporting Limit) = 2 mg/kg.
  4. "N" = This data is obtained from composite testing on more than one materials, it is possible that result obtained from individual testing on any one of the materials is substantially higher. Please be cautious when using this data for compliance evaluation.

This test report is issued by the company subject to its General Conditions of Services printed overleaf or available on request and accessible at [www.cttlab.com](http://www.cttlab.com). Attention is drawn to the limitations of liability, indemnification and jurisdictional issues defined therein. Unless otherwise stated the results shown in this report refer only to the sample(s) tested. Without prior written permission of the company, this test report cannot be reproduced, except in full. Any inquiry about this report, please raise from the date of receipt of the report within 30 days, overdue will not be accept. Items marked with "n" means they are not accredited by CNAS, "s" means the item of subcontractor. This report is not in the accredited scope of CMA and cannot be as domestic social impartiality proof data.



**Test Result(s):**

CP65, San Francisco Superior Court, Case No. CGC-10-497729 - Phthalates

Method: With reference to CPSC-CH-C1001-09.3, analyzed by Gas Chromatograph-Mass Spectrometry (GC-MS).

Substances	DBP	BBP	DEHP	DINP	DNOP	DIDP	DnHP <sup>n</sup>	Conclusion
CAS No.	84-74-2	85-68-7	117-81-7	28553-12-0	117-84-0	26761-40-0	84-75-3	
Limit (mg/kg)	1000	1000	1000	--	--	--	--	
RL (mg/kg)	50	50	50	100	50	100	50	
Material No.	Result (mg/kg)							
2	N.D.	N.D.	N.D.	N.D.	N.D.	N.D.	N.D.	PASS
3 <sup>N</sup>	N.D.	N.D.	N.D.	N.D.	N.D.	N.D.	N.D.	PASS

- Note:**
1. mg/kg = milligram per kilogram (ppm).
  2. N.D. = Not Detected (< RL).
  3. RL = Reporting Limit.
  4. "--" = According to request for testing by the applicant, is not regulatory requirements for test item.
  5. "N" = This data is obtained from composite testing on more than one materials, it is possible that result obtained from individual testing on any one of the materials is substantially higher. Please be cautious when using this data for compliance evaluation.

**Test Material List**

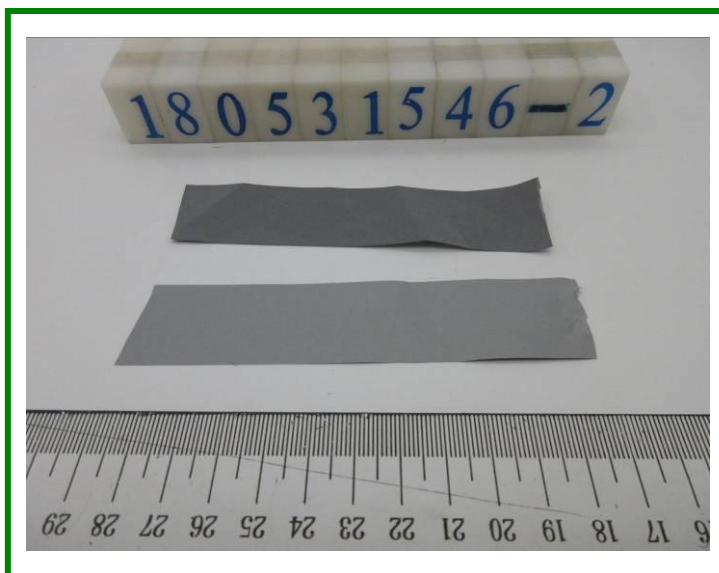
The following materials apply only to the samples submitted for chemical testing

Material No.	Description	Location
1	Silvery metal	Substrate of puller +substrate of handle
2	Gray synthetic fiber	Braid
3	Black leatherette	Two kinds of leather

This test report is issued by the company subject to its General Conditions of Services printed overleaf or available on request and accessible at [www.cttlab.com](http://www.cttlab.com). Attention is drawn to the limitations of liability, indemnification and jurisdictional issues defined therein. Unless otherwise stated the results shown in this report refer only to the sample(s) tested. Without prior written permission of the company, this test report cannot be reproduced, except in full. Any inquiry about this report, please raise from the date of receipt of the report within 30 days, overdue will not be accept. Items marked with "n" means they are not accredited by CNAS, "s" means the item of subcontractor. This report is not in the accredited scope of CMA and cannot be as domestic social impartiality proof data.



Photo of Sample:



This test report is issued by the company subject to its General Conditions of Services printed overleaf or available on request and accessible at [www.cttlab.com](http://www.cttlab.com). Attention is drawn to the limitations of liability, indemnification and jurisdictional issues defined therein. Unless otherwise stated the results shown in this report refer only to the sample(s) tested. Without prior written permission of the company, this test report cannot be reproduced, except in full. Any inquiry about this report, please raise from the date of receipt of the report within 30 days, overdue will not be accept. Items marked with "n" means they are not accredited by CNAS, "s" means the item of subcontractor. This report is not in the accredited scope of CMA and cannot be as domestic social impartiality proof data.

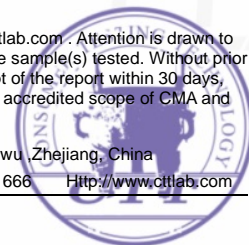
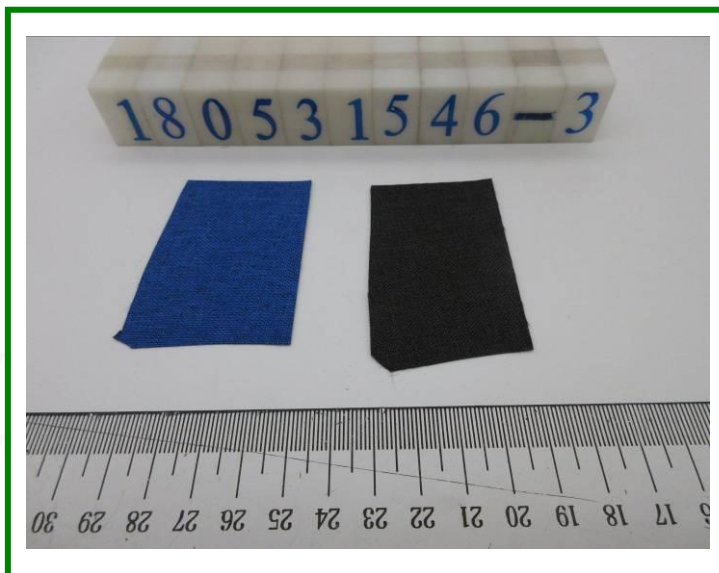


Photo of Sample:



\*\*\*End of Report\*\*\*

This test report is issued by the company subject to its General Conditions of Services printed overleaf or available on request and accessible at [www.cttlab.com](http://www.cttlab.com). Attention is drawn to the limitations of liability, indemnification and jurisdictional issues defined therein. Unless otherwise stated the results shown in this report refer only to the sample(s) tested. Without prior written permission of the company, this test report cannot be reproduced, except in full. Any inquiry about this report, please raise from the date of receipt of the report within 30 days, overdue will not be accept. Items marked with "n" means they are not accredited by CNAS, "s" means the item of subcontractor. This report is not in the accredited scope of CMA and cannot be as domestic social impartiality proof data.

