

RIHOO INDUSTRY CODIFICATION

1 COMPANY NAME

RH	RIHOO INDUSTRY
----	----------------

5 INNER RING TYPES

TYPE	DESC
L	1P-BEARING
-	2P-BEARING

2 OUTER RING SHAPE

SHAPE	DESC
R	ROUND
P	PARALLEL

6 OUTER RING SIZE

SIZE	DESC
20	
30	
45	

3 RAW MATERIAL

RM	DESC
S	BEARING STEEL
X	STAINLESS STEEL

7 DASH

4 CONCENTRIC & ECCENTRIC

STC	DESC
N	CONCENTRIC
A	ECCENTRIC

8 SEAL & SHIELD

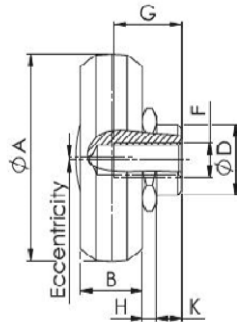
SEAL	DESC
2Z	DUST COVER
2RS	SPLASHPROOF

EXAMPLE

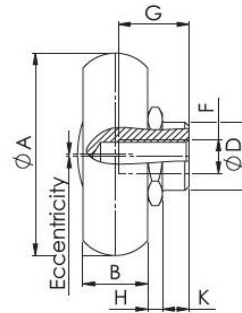
RHRSNL45-2Z
RHPXA45-2RS

VERSION 1

RHPX/RHPS
CONCENTRIC
ECCENTRIC


VERSION 2

RHRX/RHRS
CONCENTRIC
ECCENTRIC

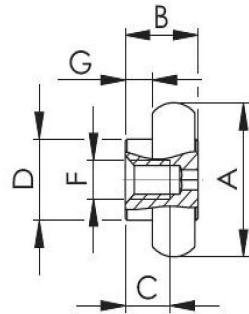


RHI CODE	A [MM]	B [MM]	D [MM]	E [MM]	H [MM]	K [MM]	G [MM]	F	MASS [KG]
RHPXN18-2RS	14	4	6	-	1.55	1.8	5.5	M4	0.004
RHPSN18-2Z	14	4	6	-	1.55	1.8	5.5	M4	0.004
RHPXA18-2RS	14	4	6	0.4	1.55	1.8	5.5	M4	0.004
RHPSA18-2Z	14	4	6	0.4	1.55	1.8	5.5	M4	0.004
RHPXN28-2RS	23.2	7	10	-	2.2	3.8	7	M5	0.019
RHPSN28-2Z	23.2	7	10	-	2.2	3.8	7	M5	0.019
RHPXA28-2RS	23.2	7	10	0.6	2.2	3.8	7	M5	0.019
RHPSA28-2Z	23.2	7	10	0.6	2.2	3.8	7	M5	0.019
RHPXN35-2RS	28.2	7.5	12	-	2.55	4.2	9	M5	0.032
RHPSN35-2Z	28.2	7.5	12	-	2.55	4.2	9	M5	0.032
RHPXA35-2RS	28.2	7.5	12	0.7	2.55	4.2	9	M5	0.032
RHPSA35-2Z	28.2	7.5	12	0.7	2.55	4.2	9	M5	0.032
RHPXN43-2RS	35	11	12	-	2.5	4.5	12	M6	0.06
RHPSN43-2Z	35	11	12	-	2.5	4.5	12	M6	0.06
RHPXA43-2RS	35	11	12	0.8	2.5	4.5	12	M6	0.06
RHPSA43-2Z	35	11	12	0.8	2.5	4.5	12	M6	0.06
RHPSN63-2ZR	50	17.5	18	-	2.3	6	16	M8	0.19
RHPSA63-2ZR	50	17.5	18	1.2	2.3	6	16	M10	0.19
RHRSN43-2Z	35.6	11	12	-	2.5	4.5	12	M6	0.06
RHRSA43-2Z	35.6	11	12	0.8	2.5	4.5	12	M6	0.06
RHRSN63-2ZR	49.7	17.5	18	-	2.3	6	16	M8	0.19
RHRSA63-2ZR	49.7	17.5	18	1.2	2.3	6	16	M10	0.19

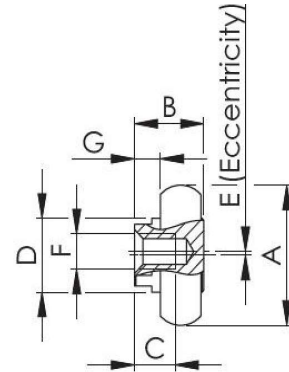
NOTE: Seals:2RS is the splash-proof seal, 2Z(2ZR for size 63) is the steel cover disc
The rollers are lubricated for life
X = Stainless Steel S=Steel

VERSION 1

RHRXL/RHRSL
CONCENTRIC



RHRXL/RHRSL
ECCENTRIC



RHI CODE	A [MM]	B [MM]	C [MM]	D [MM]	E [MM]	F [MM]	G [MM]	MASS [KG]
RHRXNL20-2RS	14	8.5	6	8	-	M4	4	0.006
RHRSNL20-2Z	14	8.5	6	8	-	M4	4	0.006
RHRXAL20-2RS	14	8.5	6	8	0.5	M4	4	0.006
RHRNAL20-2Z	14	8.5	6	8	0.5	M4	4	0.006
RHRXNL30-2RS	22.8	12	7	12	-	M5	4.5	0.02
RHRSNL30-2Z	22.8	12	7	12	-	M5	4.5	0.02
RHRXAL30-2RS	22.8	12	7	12	0.6	M5	4.5	0.02
RHRNAL30-2Z	22.8	12	7	12	0.6	M5	4.5	0.02
RHRXNL45-2RS	35.6	18	12	16	-	M6	6	0.068
RHRSNL45-2Z	35.6	18	12	16	-	M6	6	0.068
RHRXAL45-2RS	35.6	18	12	16	0.8	M6	6	0.068
RHRNAL45-2Z	35.6	18	12	16	0.8	M6	6	0.068

NOTE: Seals:2RS is the splash-proof seal, 2Z(2ZR for size 63) is the steel cover disc

The rollers are lubricated for life

X = Stainless Steel

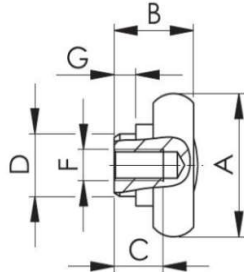
S= Steel

RIHOO INDUSTRY(HONGKONG) CO.,LIMITED
NO.15 YANGJIA, XU VILLAGE, WANSHI
ZHUANGSHI STREET, ZHENHAI DISTRICT
NINGBO, ZHEJIANG

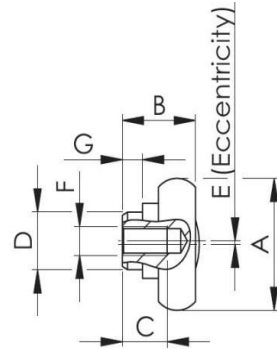
TEL.: +86-574-87626048
FAX: +86-574-87626048
E-MAIL: sales@rihooindustry.com
WEB: www.rihooindustry.com

VERSION 2

RHRX/RHRS
CONCENTRIC



RHRX/RHRS
ECCENTRIC



RHI CODE	A [MM]	B [MM]	C [MM]	D [MM]	E [MM]	F [MM]	G [MM]	MASS [KG]
RHRXN20-2RS	14	8.7	6	6	-	M4	1.8	0.006
RHRSN20-2Z	14	8.7	6	6	-	M4	1.8	0.006
RHRXA20-2RS	14	8.7	6	6	0.5	M4	1.8	0.006
RHRSA20-2Z	14	8.7	6	6	0.5	M4	1.8	0.006
RHRXN30-2RS	22.8	14	9	10	-	M5	3.8	0.022
RHRSN30-2Z	22.8	14	9	10	-	M5	3.8	0.022
RHRXA30-2RS	22.8	14	9	10	0.6	M5	3.8	0.022
RHRSA30-2Z	22.8	14	9	10	0.6	M5	3.8	0.022
RHRXN45-2RS	35.6	20.5	14.5	12	-	M6	4.5	0.07
RHRSN45-2Z	35.6	20.5	14.5	12	-	M6	4.5	0.07
RHRXA45-2RS	35.6	20.5	14.5	12	0.8	M6	4.5	0.07
RHRSA45-2Z	35.6	20.5	14.5	12	0.8	M6	4.5	0.07

NOTE: Seals:2RS is the splash-proof seal, 2Z(2ZR for size 63) is the steel cover disc

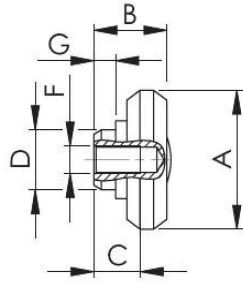
The rollers are lubricated for life

X = Stainless Steel

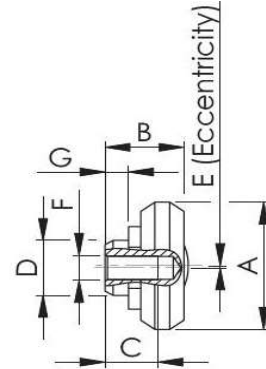
S= Steel

VERSION 3

**RHPXL/RHPSL
CONCENTRIC**



**RHPXL/RHPSL
ECCENTRIC**



RHI CODE	A [MM]	B [MM]	C [MM]	D [MM]	E [MM]	F [MM]	G [MM]	MASS [KG]
RHPXNL20-2RS	14	7.35	5.5	6	-	M4	1.8	0.004
RHPSNL20-2Z	14	7.35	5.5	6	-	M4	1.8	0.004
RHPXAL20-2RS	14	7.35	5.5	6	0.4	M4	1.8	0.004
RHPSAL20-2Z	14	7.35	5.5	6	0.4	M4	1.8	0.004
RHPXNL30-2RS	23.2	13	7	10	-	M5	3.8	0.018
RHPSNL30-2Z	23.2	13	7	10	-	M5	3.8	0.018
RHPXAL30-2RS	23.2	13	7	10	0.6	M5	3.8	0.018
RHPSAL30-2Z	23.2	13	7	10	0.6	M5	3.8	0.018
RHPXNL45-2RS	35	18	12	12	-	M6	4.5	0.06
RHPSNL45-2Z	35	18	12	12	-	M6	4.5	0.06
RHPXAL45-2RS	35	18	12	12	0.8	M6	4.5	0.06
RHPSAL45-2Z	35	18	12	12	0.8	M6	4.5	0.06

NOTE: Seals:2RS is the splash-proof seal, 2Z(2ZR for size 63) is the steel cover disc

The rollers are lubricated for life

X = Stainless Steel

S= Steel

RIHOO INDUSTRY(HONGKONG) CO.,LIMITED

NO.15 YANGJIA, XU VILLAGE, WANSHI
ZHUANGSHI STREET, ZHENHAI DISTRICT
NINGBO, ZHEJIANG

TEL.: +86-574-87626048

FAX: +86-574-87626048

E-MAIL: sales@rihooindustry.com

WEB: www.rihooindustry.com