



PU Glue Foam Manual Type

You can rest assured to buy customized GNS® PU Glue Foam Manual Type from us. We look forward to cooperating with you, if you want to know more, you can consult us now, we will reply to you in time!
 PU Glue Foam Manual Type A99 is one component aerosol polyurethane adhesive foam curing swiftly with moisture. Providing very fast and powerful adhesion for various construction materials, especially highly recommended for heat insulation systems. This PU Glue Foam is designed for easy dispensing through the straw adapter included with each can. Mainly used for installation, fixing and insulation of door and window frames; filling and sealing of gaps, joints, openings and cavities.

As the professional manufacture, we would like to provide you GNS® PU Glue Foam Manual Type. And we will offer you the best after-sale service and timely delivery. We wish to be a long-term partner with you.

1.PRODUCT FEATURE OF GNS® PU GLUE FOAM MANUAL TYPE

- Powerful adhesion of polystyrene heat panels (XPS and EPS).
- Instant adhesion and wall plugging within two hours.
- Minimum 14 m² heat insulation panel adhesion for each can.
- Minimum expansion during drying period.
- After dried, no further expansion and shrinkage.
- A lighter material compared to plaster, alternative material, used in heat insulation systems.
- No more extra burden or weight to building.
- High yield up to 50 liters, depending on the humidity and temperature.
- Usable at low temperature like 0 °C
- It does not contain any propellant gases which are harmful to the ozone layer.



GUNUO TIANJIN INDUSTRIAL CO., LTD.
WE HAVE BEEN WORKING HARD!

www.gnsufoamsealant.com

PRODUCT DETAILS



Tel:+86-20-84267539

Email:enquiry@gnsealant.com



GUNUO TIANJIN INDUSTRIAL CO., LTD.
WE HAVE BEEN WORKING HARD!

www.gnspufoamsealant.com



STABLE FOAM QUALITY

- Pre-expansion
- Good adhesion
- Smooth cell density
- No shrinkage

BETTER INSULATION FACTOR

- Cold insulation
- Sound insulation
- Heat preservation



PU ADHESION FOAM

- Simple application



GUNUO TIANJIN INDUSTRIAL CO., LTD.
WE HAVE BEEN WORKING HARD!

www.gnspufoamsealant.com

Gun Type



Straw Type



2.PERFORMANCE DATA OF PU GLUE FOAM MANUAL TYPE

Base	Polyurethane
Consistency	Stable Foam
Curing System	Moisture-cure

Tel:+86-20-84267539

Email:enquiry@gnsealant.com

Tack-Free Time (min)	6±2min
Drying Time	Dust-free after 20-25 min.
Cutting Time (hour)	20-45MIN (+25°C)
Yield (L)	5055L
Yield Metric	14 m ²
Shrink	None
Post Expansion	None
Cellular Structure	> 90% closed cells
Specific Gravity (kg/m ³)	17~22
Shear Strength	92 kgf/cm ²
Temperature Resistance	-40°C~+100°C
Application Temperature Range	+5°C~+35°C
Colour	Champagne
Fire Class (DIN 4102)	B2
Insulation Factor (Mw/m.k)	<30
Compressive Strength (kPa)	>120
Tensile Strength (kPa)	>30 (10%)
Adhesive Strength(kPa)	>80
Water Absorption (ML)	2~3(no epidermis)
	<0.5(with epidermis)

3. APPLICATIONS AREAS OF PU GLUE FOAM MANUAL TYPE

- Best for mounting heat insulation panels(styrofoam) and filling voids during adhesive application.
- Advised for wooden type construction materials adhesion to concrete, metal etc.
- Applications needed minimum expansion.
- Mounting and isolation for frames of windows and doors.



GUNUO TIANJIN INDUSTRIAL CO., LTD.
WE HAVE BEEN WORKING HARD!

www.gnspufoamsealant.com

PRODUCT APPLICATION RANGE



PRODUCT APPLICATION RANGE

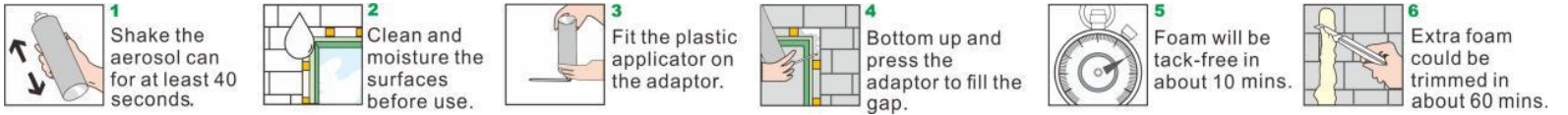




GUNUO TIANJIN INDUSTRIAL CO., LTD.
WE HAVE BEEN WORKING HARD!

www.gnspufoamsealant.com

4. APPLICATION INSTRUCTIONS OF PU GLUE FOAM MANUAL TYPE



5. STORAGE AND SHELF LIFE OF PU GLUE FOAM MANUAL TYPE

12 months in unopened packing store in temperature between +5°C to +25°C, Keep in cool, shade and well ventilated area. Always keep the can with the valve pointed upwards.

6. PACKING, SHIPPING AND SERVING OF PU GLUE FOAM MANUAL TYPE

Packing: 750ml 500ml 300ml, 12 cans/carton. (For special specifications, please contact us.)

Shipping: Sea or land transportation

Serving: We provide free design service, and you'll get excellent after-sales service, we committed to solving any problems that may occur when you use our products.

OUR FACTORY





GUNUO TIANJIN INDUSTRIAL CO., LTD.
WE HAVE BEEN WORKING HARD!

www.gnspufoamsealant.com



COMPANY PROFILE

- The biggest PU foam manufacturer in Asia
- 19 years export experience
- Sold to 77 countries and areas
- Equipped with 32 advanced full-automatic production line
- 55% market share in China
- Accredited to all kinds certificates

Tel:+86-20-84267539


Email:enquiry@gnsealant.com



GUNUO TIANJIN INDUSTRIAL CO., LTD.
WE HAVE BEEN WORKING HARD!

www.gnspufoamsealant.com

OUR ADVANTAGES



QUALITY

Provide stable and good quality assurance



PACKING

750ml 500ml 300ml, 12 cans/carton.
(For special specifications, please contact us.)



TRANSPORT

Sea or land transportation




TECHNOLOGY

Establish a joint laboratory with WANHUA & DuPont to create products that meet customer needs



COOPERATION

Customer-centric, looking forward to cooperating with all potential customers



SERVICE

We provide free design service, and you'll get excellent after-sales service

7.FAQ

Q: What is the different of the pre-expansion and post expansion? Which one is better?

A: Pre-expansion is better. Post expansion will not only damage the doors and windows after curing, but also it will leads the cost of construction higher because more foam must be cut.

Q: Why should we choose a PU foam with good elasticity?



www.gnspufoamsealant.com

A: Because the PU foam with good elasticity will not damage the doors and windows in hot weather, because its structure inside is better.

