



Low Expansion PU Spray Foam Manual Type

You are welcomed to come to our factory to buy the latest selling, low price, and high-quality GNS® Low Expansion PU Spray Foam Manual Type. We look forward to cooperating with you.

Low Expansion PU Spray Foam Manual Type is an one-component, ready to use polyurethane foam. It is fitted with a plastic adapted head for use with a foam application gun. This Low Expansion PU Spray Foam was special made for the wooden doors and windows frames with a good filling ability, also it has high thermal and sound insulation performance. Mainly used for installation, fixing and insulation of door and window frames; filling and sealing of gaps, joints, openings and cavities.

As the professional manufacture, we would like to provide you GNS® Low Expansion PU Spray Foam Manual Type. Welcome new and old customers to continue to cooperate with us to create a better future! We have the distinct advantage that each and every employee is personally responsible for the company's success. Everything we do is infused with pride of ownership and pride in a job well done.

1.PRODUCT FEATURE OF GNS® LOW EXPANSION PU SPRAY FOAM MANUAL TYPE

- Perfect adhesion to a wide variety of surfaces such as UPVC, masonry, brick, block work, glass, steel, aluminum, timber and other substrates (except PP, PE and Teflon);
- The foam will expand and cure by moisture in the air;
- Application temperature is between + 5°C to +35°C;
- Optimal application temperature is between +18°C to +30°C;
- It contains CFC-free propellants which are harmless to the ozone layer.



GUNUO TIANJIN INDUSTRIAL CO., LTD.
WE HAVE BEEN WORKING HARD!

www.gnspufoamsealant.com

PRODUCT DETAILS



Tel: +86-20-84267539

Email: enquiry@gnsealant.com



GUNUO TIANJIN INDUSTRIAL CO., LTD.

WE HAVE BEEN WORKING HARD!

www.gnspufoamsealant.com



STABLE FOAM QUALITY

- Pre-expansion
- Good adhesion
- Smooth cell density
- No shrinkage

BETTER INSULATION FACTOR

- Cold insulation
- Sound insulation
- Heat preservation



WOODEN & DOORS PU FOAM

- Excellent filling capacities
- High thermal & acoustical insulation



GUNUO TIANJIN INDUSTRIAL CO., LTD.

WE HAVE BEEN WORKING HARD!

www.gnspufoamsealant.com

Gun Type



Straw Type



2.PERFORMANCE DATA OF GNS® LOW EXPANSION PU SPRAY FOAM MANUAL TYPE

| | |
|----------------------|---------------------------------|
| Base | Polyurethane |
| Consistency | Stable Foam |
| Curing System | Moisture-cure |
| Tack-Free Time (min) | 9~10 |
| Drying Time | Dust-free after 14-16 min. |
| Cutting Time (min) | 70~80 min;(+25℃) |
| Yield (L) | 30-35 |

Tel: +86-20-84267539

Email: enquiry@gnsealant.com

| | |
|---------------------------------------|---|
| Shrink | None |
| Cellular Structure | >84% close cells |
| Specific Gravity (kg/m ³) | 16 |
| Temperature Resistance | -50℃~+80℃ |
| Application Temperature Range | +18℃~+30℃ |
| Colour | White |
| Fire Class (DIN 4102) | B3 |
| Insulation Factor (Mw/m.k) | 0.04 |
| Compressive Strength (kPa) | 125 |
| Tensile Strength (kPa) | 160 |
| Adhesive Strength(kPa) | 110 |
| Water Absorption (ML) | 2~3(no epidermis) <0.5(with epidermis) |

3. APPLICATIONS AREAS OF GNS® LOW EXPANSION PU SPRAY FOAM MANUAL TYPE

- Installing, fixing and insulating of door and window frames;
- Filling and sealing of gaps, joint and openings;
- Connecting of insulation materials and roof construction;
- Bonding and mounting;
- Insulating the electrical outlets and water pipes;
- Heat preservation, cold and sound insulation;
- Packaging purpose, wrap the precious & fragile commodity, shake-proof and anti-pressure.



GUNUO TIANJIN INDUSTRIAL CO., LTD.

WE HAVE BEEN WORKING HARD!

www.gnspufoamsealant.com

PRODUCT APPLICATION RANGE



Installation of door and window frames



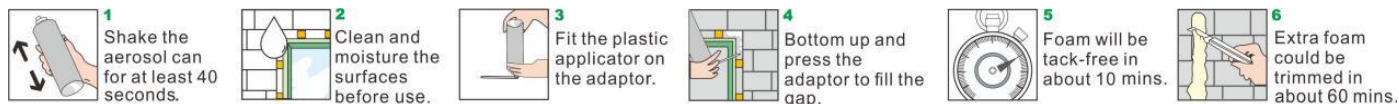
Fill the gap



Door and window fixing



4.APPLICATION INSTRUCTIONS OF LOW EXPANSION PU SPRAY FOAM MANUAL TYPE



5.STORAGE AND SHELF LIFE OF LOW EXPANSION PU SPRAY FOAM MANUAL TYPE

12 months in unopened packing store in temperature between +5℃ to +25℃, Keep in cool, shade and well ventilated area. Always keep the can with the valve pointed upwards.

6.PACKING, SHIPPING AND SERVING OF LOW EXPANSION PU SPRAY FOAM MANUAL TYPE

Packing: 750ml 500ml 300ml, 12 cans/carton. (For special specifications, please contact us.)

Shipping: Sea or land transportation

Serving: We provide free design service, and you'll get excellent after-sales service, we committed to solving any problems that may occur when you use our products.

OUR FACTORY





GUNUO TIANJIN INDUSTRIAL CO., LTD.
WE HAVE BEEN WORKING HARD!

www.gnspufoamsealant.com



COMPANY PROFILE

- The biggest PU foam manufacturer in Asia
- 19 years export experience
- Sold to 77 countries and areas
- Equipped with 32 advanced full-automatic production line
- 55% market share in China
- Accredited to all kinds certificates

Tel:+86-20-84267539

Email:enquiry@gnsealant.com



GUNUO TIANJIN INDUSTRIAL CO., LTD.

WE HAVE BEEN WORKING HARD!

www.gnspufoamsealant.com

OUR ADVANTAGES



QUALITY

Provide stable and good quality assurance



PACKING

750ml 500ml 300ml, 12 cans/carton.
(For special specifications, please contact us.)



TRANSPORT

Sea or land transportation



TECHNOLOGY

Establish a joint laboratory with
WANHUA & DuPont to create
products that meet
customer needs



COOPERATION

Customer-centric, looking
forward to cooperating
with all potential customers



SERVICE

We provide free design service,
and you'll get excellent after
-sales service

7.FAQ

Q: Why the PU foam can't be used?

A: The valve was damaged before use resulting in the leakage of gas inside the can, long time of inversion and side laying and over shelf life are the reason of the PU foam can't be used.

Tel: +86-20-84267539

Email: enquiry@gnsealant.com

Q: How to clean the spray foam gun?

A: Please use GNS Foam cleaner to remove the fresh foam.

