



Expanding PU Spray Foam Manual Type

You can rest assured to buy GNS® Expanding PU Spray Foam Manual Type from our factory and we will offer you the best after-sale service and timely delivery.

Expanding PU Spray Foam Manual Type is an one-component, high quality multi-purpose polyurethane foam. It is fitted with a plastic adapted head for use with a foam application straw. The foam will expand and cure by moisture in the air. This Expanding PU Spray Foam is designed for sealing and sealing imperfections, installation of construction components, high sound and thermal insulation, and various other repair and construction tasks. Mainly used for installation, fixing and insulation of door and window frames; filling and sealing of gaps, joints, openings and cavities.

For GNS® Expanding PU Spray Foam Manual Type, everyone has different special concerns about it, and what we do is to maximize the product requirements of each customer, so the quality of our Expanding PU Spray Foam Manual Type has been well received by many customers and enjoyed a good reputation in many countries. We hope to establish friendly cooperative relationship with your company with high quality products, reasonable price, considerate service and create a better future hand in hand.

1.PRODUCT FEATURE OF GNS® EXPANDING PU SPRAY FOAM MANUAL TYPE

- Good adhesion to a wide variety of surfaces such as UPVC, masonry, brick, block work, glass, steel, aluminum, timber and other substrates (except PP, PE and Teflon);
- The foam will expand and cure by moisture in the air, strong surface after curing;
- Strong adhesion for wide of construction material except for plastics, polyethylene and polypropylene;
- Application temperature is between + 5°C to +35°C;
- Optimal application temperature is between +18°C to +30°C;
- It contains CFC-free propellants which are harmless to the ozone layer.



GUNUO TIANJIN INDUSTRIAL CO., LTD.
WE HAVE BEEN WORKING HARD!

www.gnspufoamsealant.com

PRODUCT DETAILS



Tel:+86-20-84267539

Email:enquiry@gnsealant.com



GUNUO TIANJIN INDUSTRIAL CO., LTD.
WE HAVE BEEN WORKING HARD!

www.gnspufoamsealant.com



STABLE FOAM QUALITY

- Pre-expansion
- Good adhesion
- Smooth cell density
- No shrinkage

BETTER INSULATION FACTOR

- Cold insulation
- Sound insulation
- Heat preservation





GUNUO TIANJIN INDUSTRIAL CO., LTD.
WE HAVE BEEN WORKING HARD!

www.gnspufoamsealant.com



MULTI-USE PU FOAM

- High yield-up to 45L
- German quality
- superior hardness



GUNUO TIANJIN INDUSTRIAL CO., LTD.
WE HAVE BEEN WORKING HARD!

www.gnspufoamsealant.com

Gun Type



Straw Type



2.PERFORMANCE DATA OF GNS® EXPANDING PU SPRAY FOAM MANUAL TYPE

Base	Polyurethane
Consistency	Stable Foam
Curing System	Moisture-cure
Tack-Free Time (min)	8~9
Drying Time	Dust-free after 13-15 min.
Cutting Time (min)	60~70(+25°C)

Tel:+86-20-84267539

Email:enquiry@gnsealant.com

Yield (L)	43
Shrink	None
Cellular Structure	>84% close cells
Specific Gravity (kg/m ³)	19
Temperature Resistance	-50°C~+80°C
Application Temperature Range	+18°C~+30°C
Colour	white
Fire Class (DIN 4102)	B3
Insulation Factor (Mw/m.k)	0.039
Compressive Strength (kPa)	140
Tensile Strength (kPa)	200 (10%)
Adhesive Strength(kPa)	130
Water Absorption (ML)	2~3(no epidermis) <0.5(with epidermis)

3. APPLICATIONS AREAS OF GNS® EXPANDING PU SPRAY FOAM MANUAL TYPE

- Installing, fixing and insulating of door and window frames;
- Filling and sealing of gaps, joint and openings;
- Connecting of insulation materials and roof construction;
- Bonding and mounting;
- Insulating the electrical outlets and water pipes;
- Heat preservation, cold and sound insulation;
- Packaging purpose, wrap the precious & fragile commodity, shake-proof and anti-pressure.



GUNUO TIANJIN INDUSTRIAL CO., LTD.
WE HAVE BEEN WORKING HARD!

www.gnspufoamsealant.com

PRODUCT APPLICATION RANGE



Installation of door and window frames



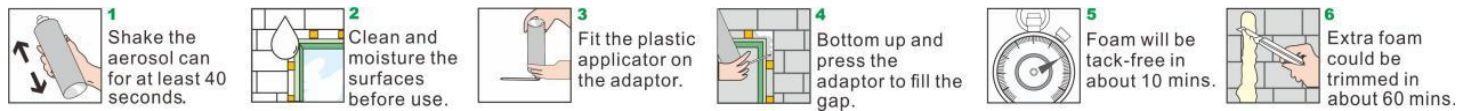
Fill the gap



Door and window fixing



4.APPLICATION INSTRUCTIONS OF GNS[®] EXPANDING PU SPRAY FOAM MANUAL TYPE



5.STORAGE AND SHELF LIFE OF EXPANDING PU SPRAY FOAM MANUAL TYPE

12 months in unopened packing store in temperature between +5°C to +25°C, Keep in cool, shade and well ventilated area. Always keep the can with the valve pointed upwards.

6.PACKING, SHIPPING AND SERVING OF EXPANDING PU SPRAY FOAM MANUAL TYPE

Packing: 750ml 500ml 300ml, 12 cans/carton. (For special specifications, please contact us.)

Shipping: Sea or land transportation

Serving: We provide free design service, and you'll get excellent after-sales service, we committed to solving any problems that may occur when you use our products.



GUNUO TIANJIN INDUSTRIAL CO., LTD.
WE HAVE BEEN WORKING HARD!

www.gnspufoamsealant.com



COMPANY PROFILE

- The biggest PU foam manufacturer in Asia
- 19 years export experience
- Sold to 77 countries and areas
- Equipped with 32 advanced full-automatic production line
- 55% market share in China
- Accredited to all kinds certificates

Tel:+86-20-84267539

Email:enquiry@gnsealant.com



GUNUO TIANJIN INDUSTRIAL CO., LTD.
WE HAVE BEEN WORKING HARD!

www.gnspufoamsealant.com

OUR ADVANTAGES



QUALITY

Provide stable and good quality assurance



PACKING

750ml 500ml 300ml, 12 cans/carton.
(For special specifications, please contact us.)



TRANSPORT

Sea or land transportation



TECHNOLOGY

Establish a joint laboratory with WANHUA & DuPont to create products that meet customer needs



COOPERATION

Customer-centric, looking forward to cooperating with all potential customers



SERVICE

We provide free design service, and you'll get excellent after-sales service

7.FAQ

Q: How to choose gun type PU foam or manual type PU foam?

Tel:+86-20-84267539

Email:enquiry@gnsealant.com



www.gnspufoamsealant.com

A: For construction tasks, gun type is more recommended to use because it is more professional and the running mater is longer than manual type, thus it will save more costs. For home use or DIY, manual type is more recommended because it is more convenient to use, but it also about the market demand.

Q: What's the advantage of pre-expansion ?

A: Pre-expansion will not damage doors or windows after the foam curing, and it can prevent waste and save cost.

